

DDB RLM License Server Installation Guide



DDBST - Dortmund Data Bank Software & Separation Technology GmbH

Marie-Curie-Straße 10

D-26129 Oldenburg

Tel.: +49 441 36 18 19 0

support@ddbst.com

www.ddbst.com

Contents

- 1 Introduction..... 3
- 2 Installation Requirements 4
- 3 Installation of the License Server 4
- 4 Request and Install a License 7
- 5 License Server Administration 7
 - 5.1 The Embedded Web Server 7
 - 5.2 The RLM Utility Program..... 7
 - 5.3 The DDB RLM Server Configuration Program 7

1 Introduction

The license server is the rights manager in the DDB system. The server knows how many users can use a DDB program at a time. All single programs like *Dortmund Data Bank*, *Predict Pure*, etc. are asking the license manager for the permission to be executed.

The DDBST software uses the Reprise License Manager (RLM) from Reprise Software, Inc. (www.reprisesoftware.com) as license management system. The setup installs RLM as well as a management application written by DDBST.

The license server and the client programs are communicating via TCP/IP. The client must be able to communicate with the server on two ports, the RLM port and the ISV port. If there is a firewall between the client and the server, the firewall must allow connections to both ports (RLM and ISV). On the client computer, only the RLM port can be specified. The default RLM port is 5053 (registered by Reprise for the RLM license server). Changing the RLM port means to change the port specification on both client and server side. If the ISV port is not specified, the server selects a free port by itself, which can change on every restart of the server.

When the license server is started, it reads a license file (LIC) which can also contain the RLM and ISV port specification. In general, the license file provided by DDBST does specify neither the RLM port nor the ISV port.

Example:

```
HOST localhost 12345678
ISV ddbst
...
```

This license file is valid on the host with the computer ID “12345678” only. The HOST line does not contain a port number, so the default RLM port (5053) will be used. The ISV line does not contain a port number, so the license server will select a free port on every start.

Use the *DDB RLM Server Configuration* program to change the RLM port or ISV port. Changes made to the contents of the license file other than the port numbers can make the license file invalid!

On the client computer, only the license server location (and maybe the RLM port) has to be specified. To use *myserver* as license server on the default RLM port use

```
HOST myserver ANY
```

as license file.

To use *myserver* as license server on RLM port 34522 use

```
HOST myserver ANY 34522
```

as license file. The license server location and port can be specified during the installation of DDB. The specification can be changed afterward using the *DDB RLM Client Configuration* program.

The license server contains an optional embedded web server to perform some administration tasks. The default port for the web server is 5054 (registered by Reprise).

Currently RLM v16.1 is used. Further details about the RLM license server can be found in the RLM end-user manual, which is part of the installation.

For a **single user license**, the license server is not needed.

2 Installation Requirements

To install the *DDB RLM License Server* administrative rights are required. On Terminal Server editions the setup has to be started from the *add/remove programs* dialog of the control panel. An officially supported Microsoft Windows version at release time is required.

If an instance of the RLM server of another software vendor is already used on the target system, then caution is advised. Please read the article [License Server Administration for Multiple Software Providers](#) for details.

3 Installation of the License Server

If a previous installation of the *DDB RLM License Server* exists on the system, it will be automatically removed during the installation of the current version. The uninstall process will keep all installed license files.

The setup starts with a *Welcome* dialog (see Figure 1).

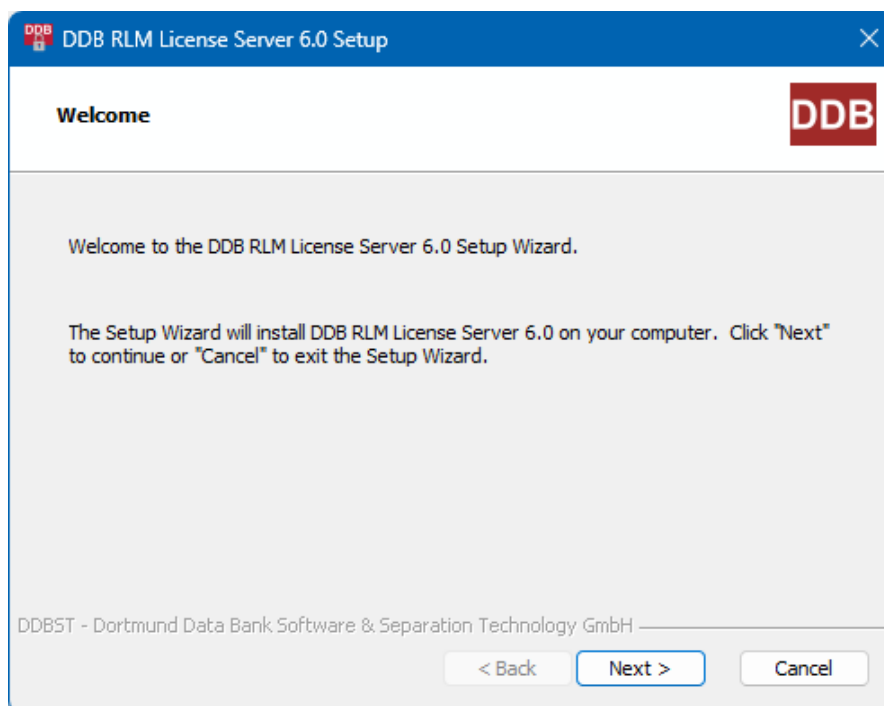


Figure 1

With a click on the *Next* button, the setup displays the *Installation Folder* dialog (see Figure 2).

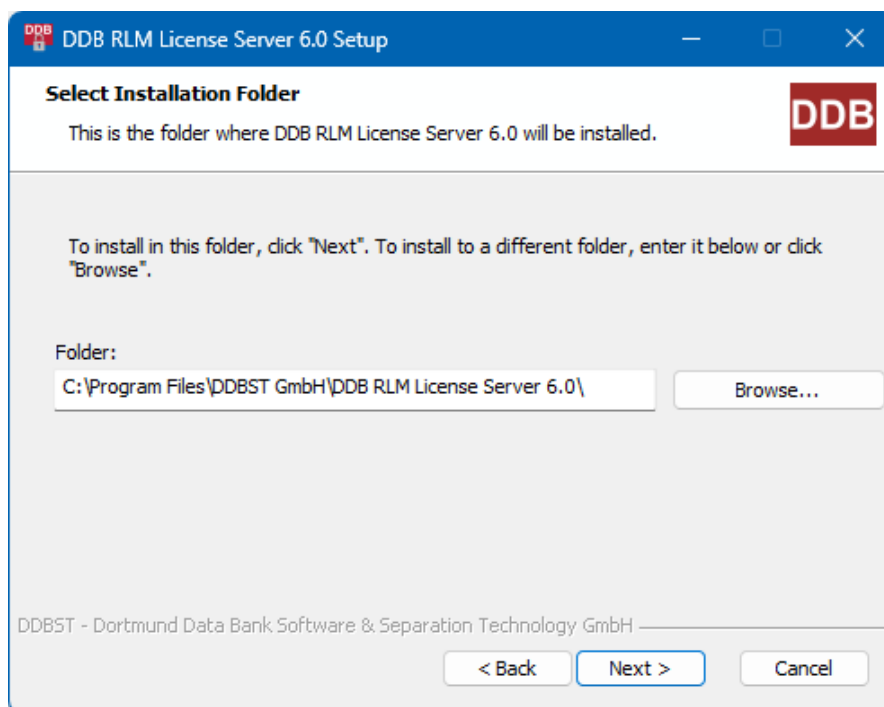


Figure 2

Here the user can change the directory where the program files are installed.

The *RLM Options* dialog (see Figure 3) can be used to activate the embedded web server (deactivated by default) and to specify the web server port (if activated). Furthermore, it is possible to specify an SSL certificate file and a private key file, which are read when the web server starts. The web server will generate a self-signed certificate (`rlm-cert.pem`) and key (`rlm-key.pem`) on startup, if they do not exist.

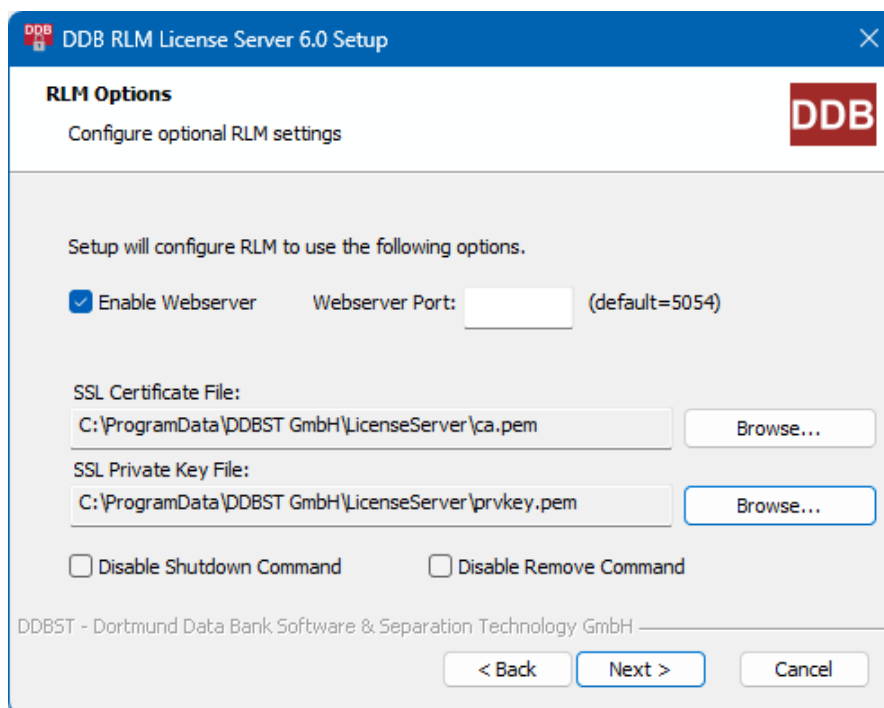


Figure 3

In addition, it is possible to specify if the server accepts the commands *rlm*down and/or *rlm*remove.

In the *Ready to Install* dialog (see Figure 4) click on the *Install* button to start the installation.

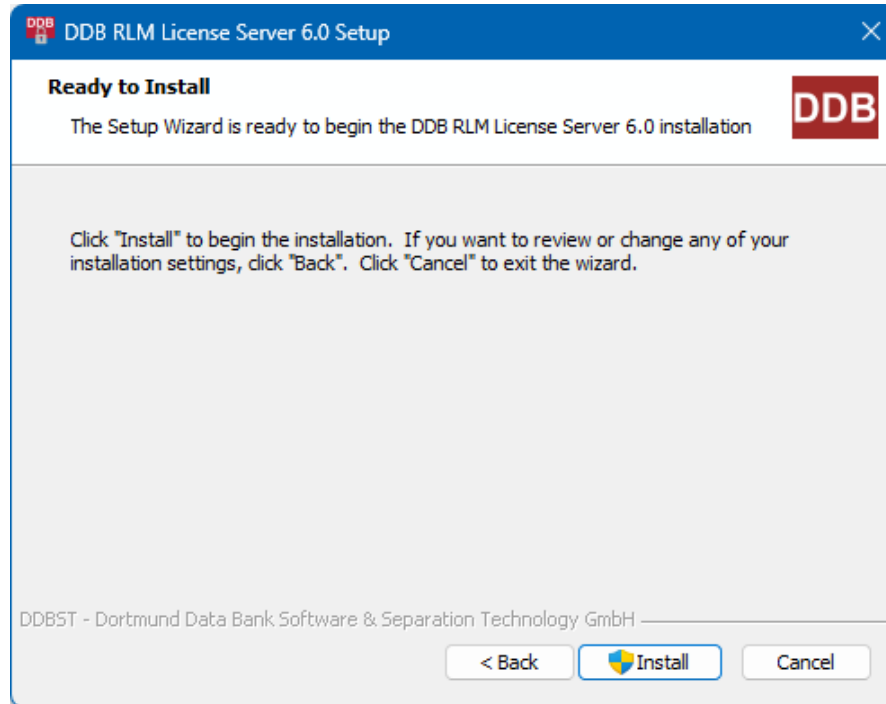


Figure 4

Depending on the system settings, the *User Account Control* (UAC) will ask for permission to proceed with the installation (running elevated).

Now the setup installs the files and configures the system.

Finally, the *Completed* dialog is displayed (see Figure 5).

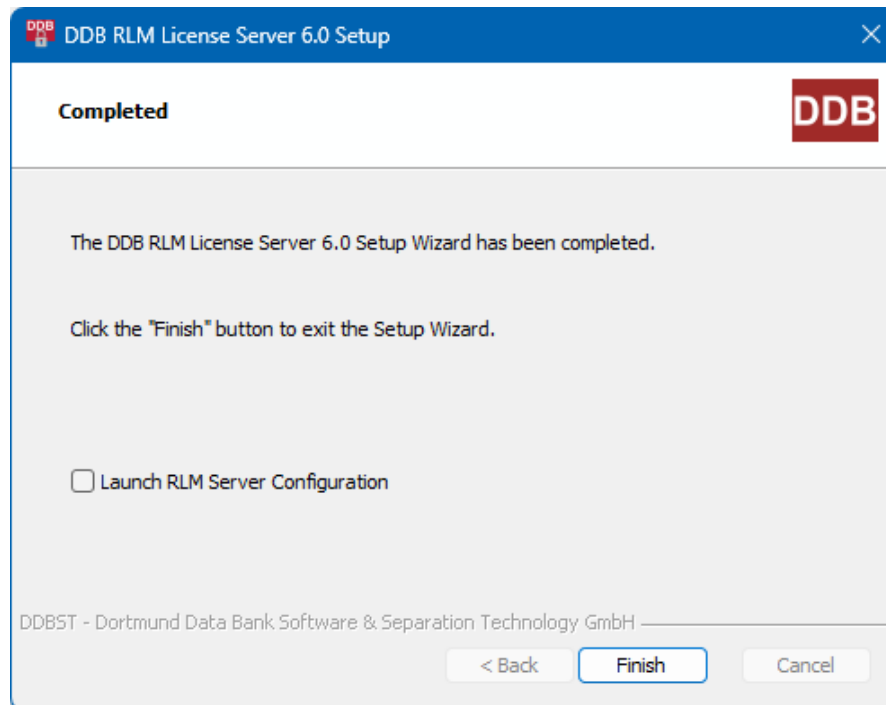


Figure 5

The license server runs as Windows service application. The *DDB RLM Server Configuration* program can be used to request and maintain licenses. The program can also be used to display the license server status and to start or stop the service.

Use the option *Launch RLM Server Configuration* to run the configuration program immediately after the installation has finished.

The setup will start the license server after the installation. In addition, the server is started automatically on every reboot of the system.

4 Request and Install a License

The *DDB RLM Server Configuration* documentation describes how to request and install licenses.

5 License Server Administration

5.1 The Embedded Web Server

The license server has an embedded web server, which can be activated at installation time. The web server is running on port 5054 by default.

To access the web server, a login is required. The default user name and password are “admin”. On the first login you will be prompted to set a new password.

Please have a look at the end-user manual for details.

5.2 The RLM Utility Program

Some license server administration tasks can be performed with the *rlmutil* program. Please have a look at the RLM end-user manual for details.

5.3 The DDB RLM Server Configuration Program

The *DDB RLM Server Configuration* program can be used to request, install and review licenses (see above). In addition, some simple license server administration tasks can be performed: The license server can be started or stopped. The status of the license server can be displayed. Furthermore, the license server can be forced to reread all license files.