

# Dortmund Data Bank (DDB) Configuration

DDBConfig



**DDBST**

Dortmund Data Bank  
Software & Separation  
Technology

DDBST - Dortmund Data Bank Software & Separation Technology GmbH

Marie-Curie-Straße 10

D-26129 Oldenburg

Tel.: +49 441 361819 0

[support@dbst.com](mailto:support@dbst.com)

[www.dbst.com](http://www.dbst.com)

## Contents

1	Introduction .....	3
2	DDB Configuration .....	5
3	The Menu.....	6
3.1	File Menu .....	6
3.2	Check Menu .....	6
3.3	? Menu.....	6
4	Global Configuration.....	7
4.1	Modify Settings.....	7
4.2	Saved Configurations .....	7
5	File Redirections.....	8

# 1 Introduction

The “**D**ortmund **D**ata **B**ank” is a compilation of several independent data bank files and programs connected by their location. The locations are actually folders where all files are installed during the setup process.

The DDB database management supports currently two distinct data bank folders which are equivalent to two data bank systems:

- The “public” data banks  
These data banks are created and distributed by DDBST GmbH once a year at spring time.
- The “private” data banks  
These data banks are created and managed by the database customers and are used to store company data.

There are two additional folders which are used for the programs and a DDB internal clipboard. The DDB internal clipboard is a place for temporarily created files mainly used for transferring data to legacy FORTRAN programs and to store the result files.

The programs folder is not stored in the DDB configuration since it doesn’t matter for the working of the DDB system where the applications are stored if the installation has been performed properly.

The DDB configuration tool has been designed change the location of the three folders for the public and private data bank as well as the clipboard folder and also allows setting several other options.

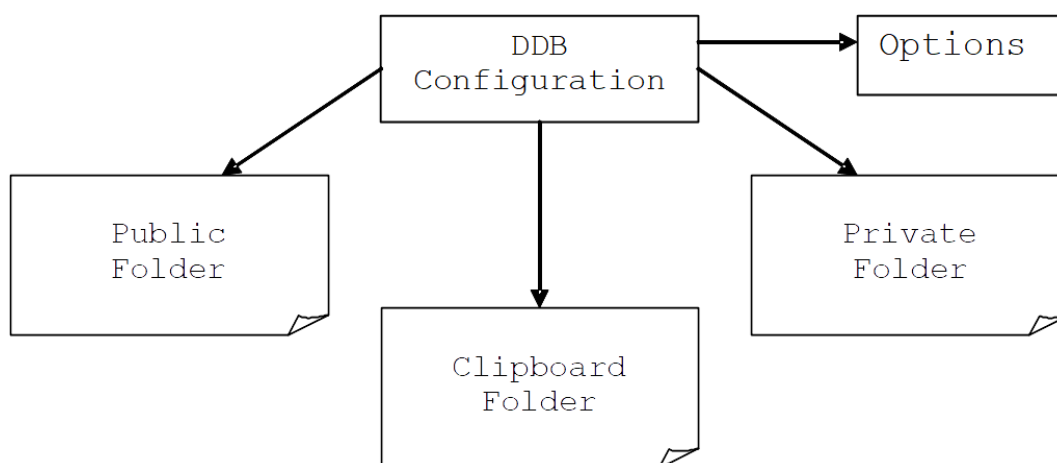


Figure 1

Figure 2 shows more detailed how the mixture data banks are organized within the DDB. Published experimental data refer to *components* (defining the system) and *literature data* (representing the paper containing the data). The DDB contains a component list as well as literature data sets. These are physically organized outside the actual mixture data banks.

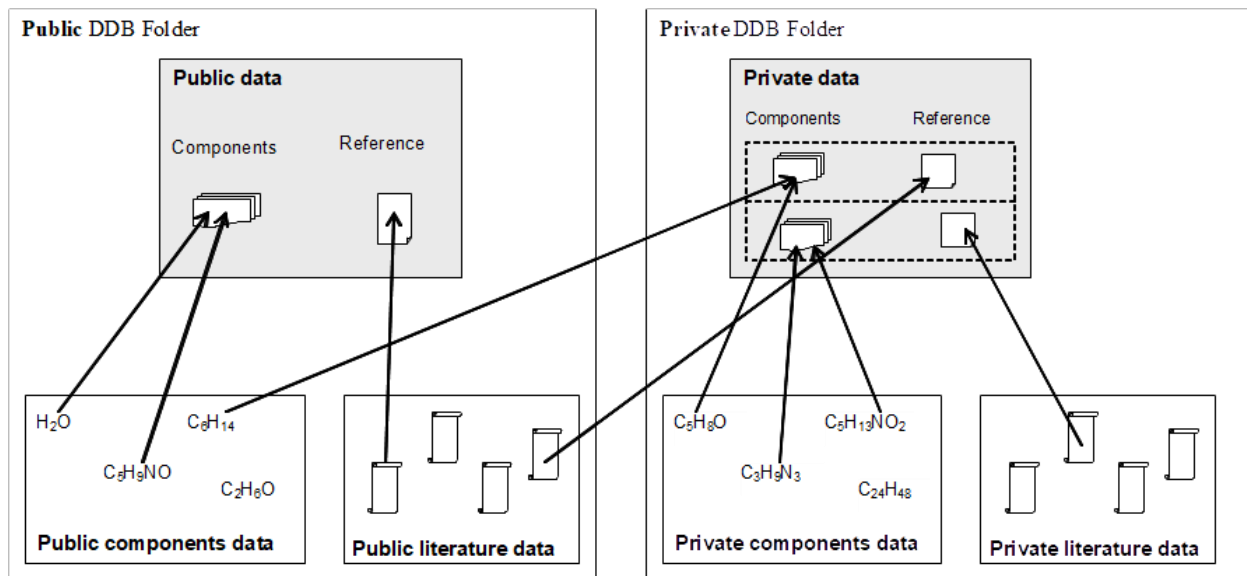
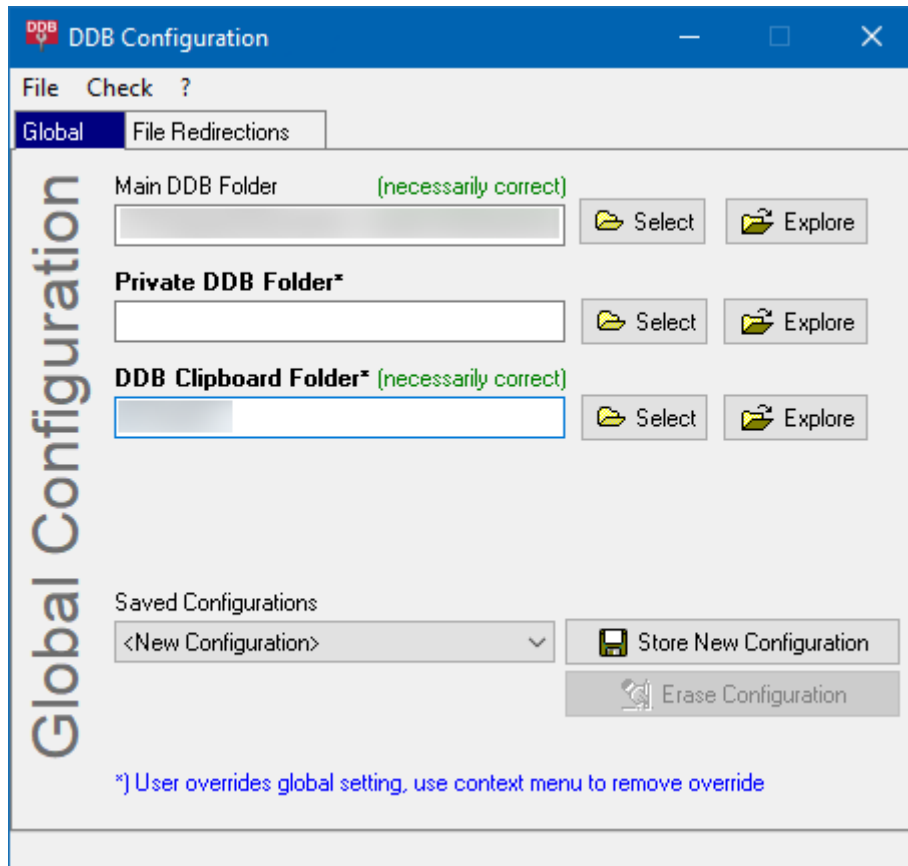


Figure 2

Experimental data provided by DDBST will refer to public components and public literature only. Customer's data may also refer to private (user-defined) components and private literature.

## 2 DDB Configuration

The program *DDBConfig* is the configuration management program. It has the following pages:



1. *Global*: Configuration page for DDB folders (see section *Global Configuration* on page 7)
2. *File Redirections*: Temporarily replace DDB files by external files (see section *File Redirections* on page 8)

## 3 The Menu

### 3.1 File Menu

- **Save:** Save settings
- **Reload:** Reload configuration (overwriting changes, or read changes made by other programs)
- **Exit:** Close the programs

### 3.2 Check Menu

- **Check Settings:** Check consistency and correctness of some settings
- **Call Test DDB Installation:** Run a little test program to check if DDB is installed and configured correctly
- **Call Index Manager:** Opens the Index manager for Index information and rebuilding.
- **Call RLM Client Configuration:** The license configuration has moved to a different program that can be started from here.
- **Open User Configuration Folder:** Start explorer with the folder where DDB configuration files for the current user are stored
- **Open Global Configuration Folder:** Start explorer with the folder where the DDB configuration for all users are stored

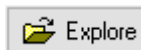
### 3.3 ? Menu

- **Manual:** Opens this file
- **Updates:** Opens the DDBST “Updates” web page in a web browser.
- **About:** Display “About” dialog with copyright information

## 4 Global Configuration

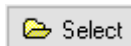
1. “*Main DDB Folder*”  
This folder contains all data banks delivered from DDBST GmbH. This folder is set up during the installation. Changing this folder is only useful if there’s another **complete** database folder available.
2. “*Private DDB Folder*”  
This folder contains all data banks created and inserted by customers. The folder will be created during the installation but can be changed to another location without affecting the working of the DDB system.
3. “*DDB Clipboard Folder*”  
This folder contains temporarily created files used for the communication with legacy FORTRAN programs and result files created by these programs. It must be a valid folder otherwise most of the calculation, fit and predict cannot work. If the folder name is empty the Windows TEMP folder will be used (may be user specific).

The entries for the public database folder **must** point to a **complete** database folder and the clipboard folder **must** point to an existing and writable folder. Otherwise, the DDB system cannot work properly.



The *Explore* buttons can be used to open the *Main DDB Folder*, the *Private DDB Folder* or the *DDB Clipboard Folder* in the Explorer.

### 4.1 Modify Settings

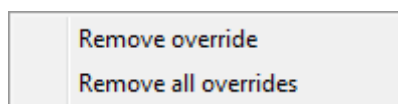


The path settings can be changed directly or by clicking the *Select* button which invokes the Windows folder selection routine.

If a user starts the DDB configuration program for the first time the DDB configuration common to all users (as specified at installation time) is displayed. It is no longer possible to modify the global DDB configuration with this program. Instead, a modification will *override* the global configuration and will be visible for the current user only. An overwritten setting will be marked with star (“\*”) at the end of the caption.



To revert an overwritten setting to the global setting right-click on the caption and select *Remove override*. To revert all overwritten settings select *Remove all overrides*.



Click the *Save* button in the *File* menu to activate a DDB configuration.

### 4.2 Saved Configurations

Use the *Store New Configuration* button to save the overwritten settings in the list of saved configurations.

Use the *Erase Configuration* button to erase a saved configuration from the list.

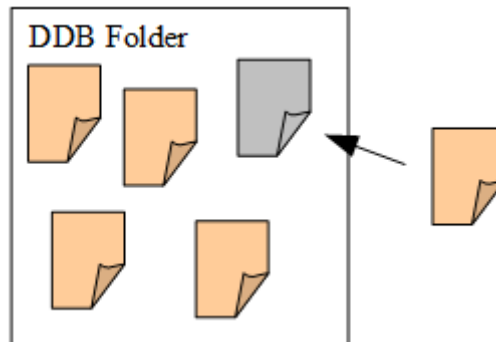
When a saved configuration is selected from the list the settings are modified immediately.

## 5 File Redirections

File redirections can be used to redirect the access to single files from the public DDB folder to files stored in another folder. This might be useful if there's a different parameter or data file that should be used instead of the delivered files.

It's possible to specify up to 25 file redirections. The "Remove" button deletes an entry and the "Change" invokes two file selection dialogs where the original file and its substitution must be selected. Please note that the file redirections are activated for the *current user* only.

This technique allows replacing access to data files from the DDB folder by customer data files. Please be aware that this will lead to different calculations and displays.



Use the *UNIFAC Consortium Entries* button to redirect standard DDB files to the UNIFAC consortium files. These files are delivered separately from the DDBST files. If the original files should be kept in the DDB folder but the consortium files should be used instead it is possible to select a folder where all delivered consortium files are stored. The result is that all DDB programs are then working with the consortium files.

Use the *Remove All* button to clear all redirections.

To make the redirections active click the *Save* button in the *File* menu.

Use the *Store New Redirection List* button to add the current setting to the list of file redirections. Use the *Erase Redirection List* button to remove a setting from the list of file redirections. When a saved redirections setting is selected the redirection entries are updated immediately.

For most DDB applications active file redirections are indicated by a system notification.