



DDBST

DORTMUND DATA BANK SOFTWARE & SEPARATION TECHNOLOGY

DDBST - Dortmund Data Bank Software & Separation Technology GmbH
Marie-Curie-Str. 10 | D-26129 Oldenburg | Germany

DDBSP 2018 - Model Parameter Estimator

Fitting g^E Model Parameter from Group Contribution based Estimation Methods

(included in the DDBSP Mixture Prediction Add-On)

For the calculation of the multicomponent mixture behavior using different g^E -models the knowledge of the binary interaction parameters is required.

If these parameters are not available, they are usually derived from experimental vapor-liquid equilibrium data or other mixture data. If these data are also not available, group contribution methods can be used for the estimation of activity coefficients. Binary interaction parameters can then be derived from these values by non-linear regression.

In most cases, the parameters are directly calculated from only few estimated activity coefficients at infinite dilution. This procedure may in several cases result in very unreliable parameters.

The **DDBSP Model Parameter Estimator** employs a more complex and safe approach for homogeneous and heterogeneous systems. The package allows generating binary interaction parameters for the **Wilson**, **NRTL** and **UNIQUAC** model.

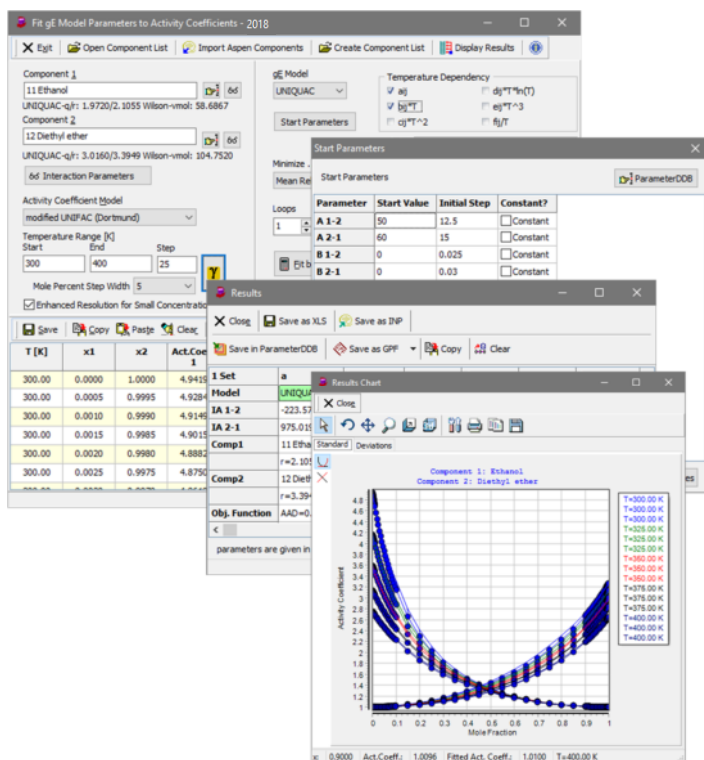
estimation.

The software comes with

- the latest published parameter matrices for the estimation methods.
- structural group lists for more than 18,500 components
- r and q values (UNIQUAC) for more than 11,400 components.
- liquid densities (Wilson) for approx. 2,130 components

Members of the UNIFAC-Consortium (see www.unifac.org) have access to the latest UNIFAC and mod. UNIFAC parameters.

Component lists can be entered by hand or imported directly from the Aspen simulation object (OLE) or the "bkp" project file. Parameters can be exported to Microsoft Excel or Aspen® (via "inp"-file).



License

Basic price for a PC version ¹	2,600 €
1-year license ²	650 €
Yearly fee for a 7-year license ³	780 €

For more than one computer, special prices apply:

- 2 workstations add 50%
- 3 workstations add 80%
- 4 workstations add 100%.

A discount of 75% is available for universities. Not available as site or world-wide license.

Changes and errors are possible regarding all information and prices.

These parameters may be constant or linearly or quadratic dependent on temperature. The models **UNIFAC**, **mod. UNIFAC (Dortmund)**, **mod. UNIFAC (Lyngby)**, **mod. UNIFAC (NIST)**, **ASOG**, **COSMO-RS(OI)** and **COSMO-SAC** are available for data

¹ For approx. 16 2/3 % of the price, a yearly update is available

² Expires after one year

³ The license includes 6 yearly updates. After 7 years, regular updates are available for approx. 16 2/3 % of the basic price.

DDBST – Dortmund Data Bank
Software & Separation Technology GmbH

Marie-Curie-Str. 10 | D-26129 Oldenburg | Germany
+49-441-361819-0
+49-441-361819-10
info@ddbst.de | www.ddbst.de

Oldenburgische Landesbank AG
Account No.: 142 6 164 800 | Bank Code: 280 200 50
SWIFT-BIC: OLBO DE H2 | IBAN: DE46 280 200 50 142 6 164 800
HRB Oldenburg 2521 | VAT Reg. No.: DE117 483996

Managing Directors:
Prof. Dr. Jürgen Gmehling,
Dr. Andreas Grybat, Dr. Sven Horstmann,
Dr. Christian Ihmels, Dr. Bastian Schmid