

RLM License Configuration

Contents

Introduction.....	1
Requesting a License.....	1
Installation of a License.....	1
Deletion and De-/Activation of a License.....	2
Modification of the Server Specification.....	3
Server Specification on a Client.....	3
Server Specification on the Server.....	3
License Server Administration.....	4
The Embedded Web Server.....	4
The RLM Utility Program.....	4

Introduction

Since 2009 DDBST uses the Reprise License Manager (RLM) from Reprise Software, Inc. (www.reprisesoftware.com). The DDBST RLM License Configuration program can be used to request, install and review licenses. In addition some simple license server administration tasks can be performed.

Requesting a License

Switch to the *Registration* page. You can enter your name, address and phone number. At least the activation code, the company name and the email address is required.

Click on the *Email Registration Request* button to open the standard MAPI email client with a new message. The recipient, subject and the registration information as attachment will be added automatically.

If it is not possible or desired to use MAPI click on the button *Save Registration Request* to store the specified personal information together with some system information to a file. Send the file (e.g. as attachment) to register@ddbst.de to request a permanent license.

After sending the request you will receive a license file (*.LIC) usually within 24 hours.

Installation of a License

Server: Administrative user rights are required to update a server license. On systems with UAC turned on the RLM license configuration program has to be started with the option “run as administrator”.

To install a new license switch to the *Licenses* page. Click on *Add License*.

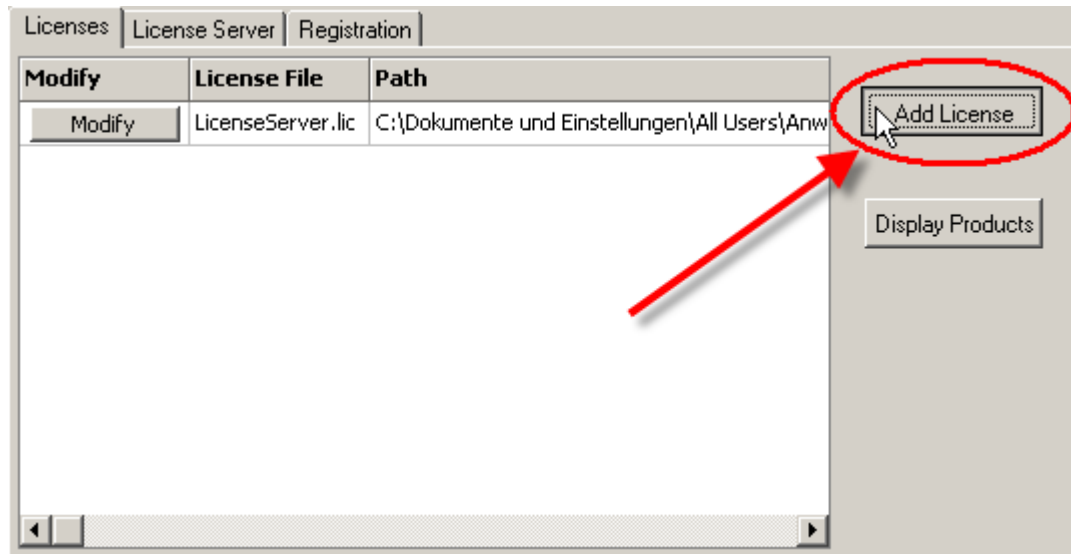


Figure 1: Adding a new license

Use the *open dialog* to select the LIC file you received from DDBST and stored somewhere (e.g. on the desktop). The new license will appear in the licenses list.

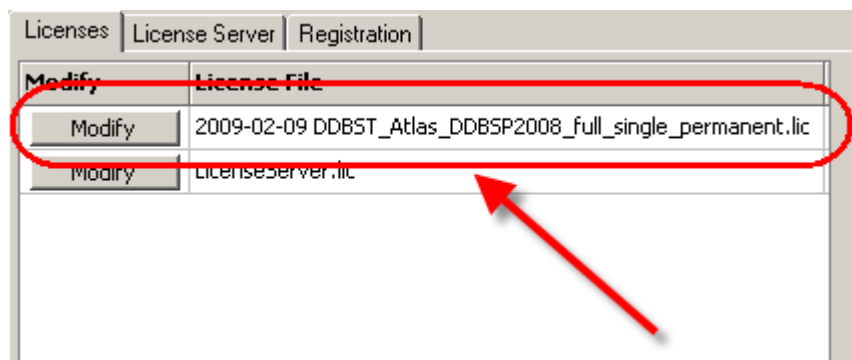


Figure 2: New license in the licenses list

Client: If DDBSP is running the DDB license system will be refreshed to make the license available immediately.

Server: The license server will be restarted automatically to make the license available immediately.

Click on an entry of list to see the contents of the license file.

Deletion and De-/Activation of a License

Click on the *Modify* button next to a license entry and select *Remove License* to erase a license file from the computer. No backup will be made.

Click on the *Modify* button next to a license entry and select *Disable License* to deactivate a license without removing the license file from the computer. The license will appear in gray text.

Click on the *Modify* button next to a license entry and select *Enable License* to activate a disabled license.

Client: If DDBSP is running the DDB license system will be refreshed to make the change available immediately.

Server: The license server will be restarted automatically to make the change available immediately.

Modification of the Server Specification

The license server and the client programs are communicating via TCP/IP. The client must be able to communicate with the server on two ports, the *RLM port* and the *ISV port*. If there is a firewall between the client and the server the firewall must allow connections to both ports (RLM and ISV). On the client computer only the RLM port can be specified. The default RLM port is 5053 (registered by Reprise for the RLM License Server). Changing the RLM port means to changed the port specification on both client and server side. If the ISV port is not specified the server selects a free port by itself which can change on every restart of the server.

Server Specification on a Client

During the installation of DDBSP the license server location and RLM port can be specified. The specification is stored in a special LIC file containing only a HOST line. Click on the *Modify* button next to *LicenseServer.lic* entry and select *Edit License* to change the license server specification on a client computer.

Modify	License File	Path
Modify	2009-02-09 DDBST_Atlas_DDBSP2008_full_single_permanent.lic	C:\Dokumente und Einstellungen\#
Modify	LicenseServer.lic	C:\Dokumente und Einstellungen\#

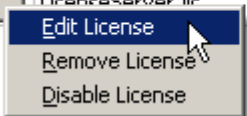


Figure 3: Edit License Server Specification (Client)

In the appearing dialog the name or IP address (IPv4) and (optional) the RLM port of the license server computer can be modified. Please note that the RLM port must be identical for both client and server computer.

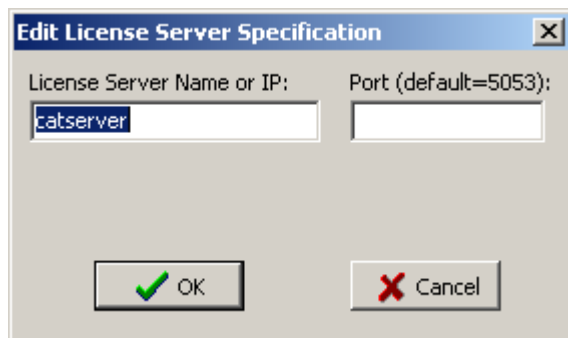


Figure 4: Edit License Server Specification Dialog (Client)

With a click on the OK button the new specification will be written to the LIC file. No backup of the old setting will be made. If DDBSP is running the DDB license system will be refreshed to make the license server change available immediately.

Server Specification on the Server

The RLM license server uses two TCP/IP ports to communicate with the client. The ports are not specified during the installation. Instead the ports are specified by modifying the license file(s) received by DDBST. To ease the change of the ports the modification can be done using a graphical interface. So editing the license text file is not necessary.

To change any of the ports click on the *Modify* button next to license file that should be altered and select *Edit License*.



Figure 5: Edit License Server Specification (Server)

In the appearing dialog the RLM port and the (optional) ISV port of the license server can be modified. Please note that the RLM port must be identical for both client and server computer.

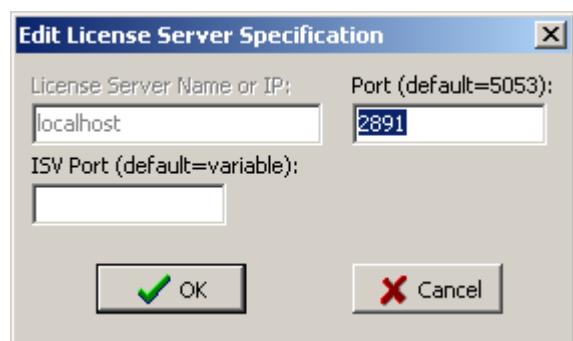


Figure 6: Edit License Server Specification Dialog (Server)

With a click on the OK button the new specification will be written to the LIC file. No backup of the old setting will be made. The license server will be restarted automatically to make the change available immediately.

License Server Administration

The DDBST RLM License Configuration program can be used to perform some simple license server administration tasks. On the *License Server* page the license server can be started or stopped. Furthermore the status of the license server can be displayed.

For all operations administrative user rights are required.

The Embedded Web Server

The license server has an embedded web server which can be activated at installation time. The web server is running on port 5054 by default. Please have a look at the end-user manual for details.

The RLM Utility Program

Some license server administration tasks can be performed with the *rlmutil* program. Please have a look at the end-user manual for details.