

# DDBSP Client 2009 – Installation Guide

## Contents

Introduction.....	1
Note on DDB Configuration Change in DDBSP 2008.....	1
Installation Requirements.....	1
Installation of DDB/DDBSP Client.....	2
Welcome.....	2
License Agreement.....	2
Destination Location.....	3
DDB Configuration.....	4
Select License Server.....	5
Select Program Manager Group.....	6
Start Installation.....	6
Installation Finished.....	8
DDBSP Client 2009 – Silent Installation.....	9
Silent Install.....	9
Example.....	9
Silent Uninstall.....	10
Example.....	10

## Introduction

The DDB/DDBSP Client setup creates a local DDB/DDBSP installation where the database and the programs can reside on a remote machine. Only shortcuts to the programs and a DDB configuration are installed but the programs and the database are not copied.

### **Note on DDB Configuration Change in DDBSP 2008**

Up to DDBSP 2007 the DDB configuration was stored either in the file C:\DDB.CFG or in the registry and was used by all DDBSP versions. Since DDBSP 2008 the behavior has changed. Now each DDBSP version is using its own DDB configuration. It is possible to have more than one version of DDBSP and DDB installed on the same system. Changing the DDB configuration in one version will no longer change the DDB configuration in other versions.

### **Installation Requirements**

To install *DDB/DDBSP Client* administrative rights are required. On systems with the *User Access Control* (UAC) turned on the setup will be started with the option “run as administrator”. On *Terminal Server* editions the setup has to be started from the “add/remove programs” dialog of the control panel.

DDB/DDBSP needs a valid license to run. The license can reside on the local computer (single-user license) or can be served by a license server (concurrent license). The installation of a license is described in the *RLM License Configuration* documentation.

## Installation of DDB/DDBSP Client

The client setup is started from within the “DDBSP Setup” (see Figure 1), which is started automatically when the CD is inserted, and the Windows-Auto play-mode is enabled.

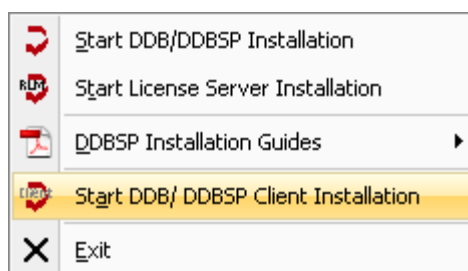


Figure 1

### Welcome

The setup program starts with a “Welcome” dialog (see Figure 2).

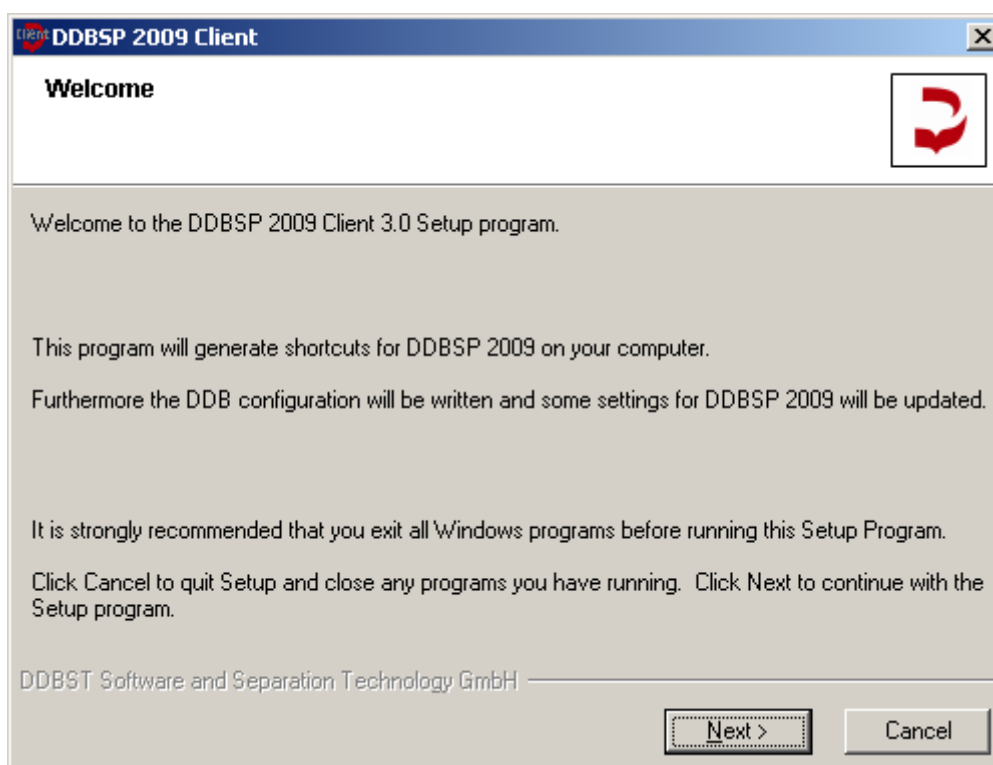


Figure 2

The installation program displays a warning that all other programs should be shut down. The warning can be ignored only if no other DDB program is currently active. DDB programs should be shut down before continuing.

If any existing edition of DDBSP 2009 is already installed on the system the setup will abort with an error message when the *Next* button is pressed.

### License Agreement

The next step in the setup process is the display of a license agreement (see Figure 3).

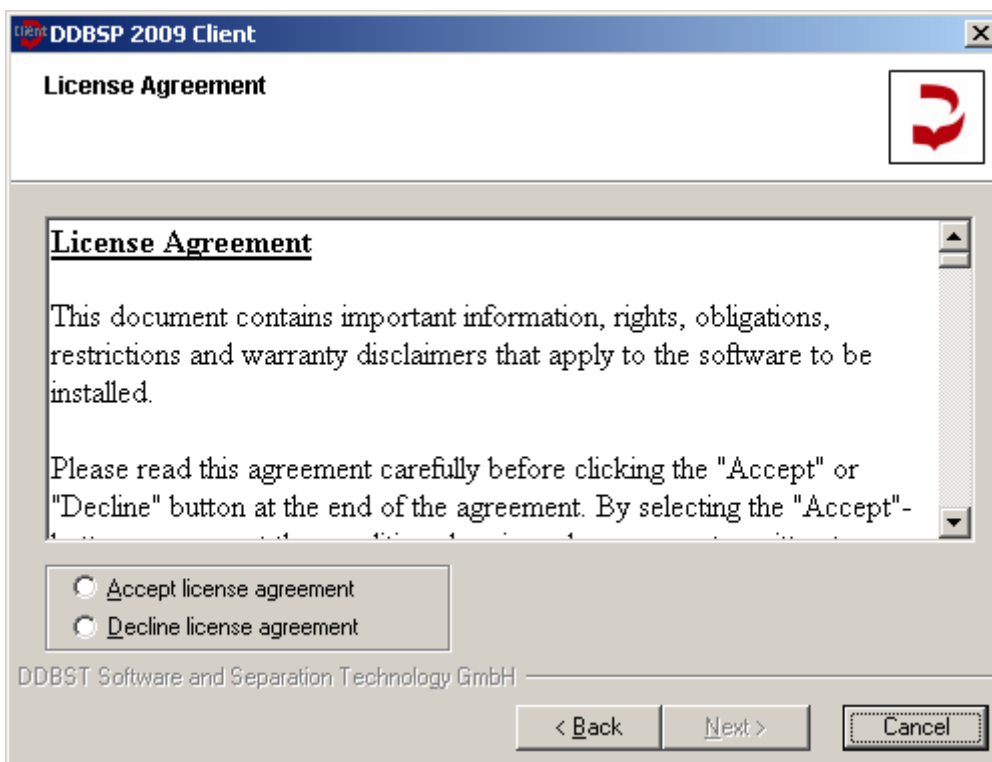


Figure 3

1. Read the agreement carefully and accept the license agreement by clicking the radio button as shown in Figure 5.
2. Click the now enabled “Next” button to proceed with the next step of the installation.

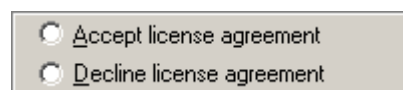


Figure 4

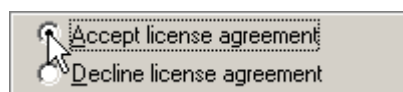


Figure 5

It is also possible to copy the text to the Windows clipboard by

1. clicking in the text area,
2. pressing *Control-A* to select the entire text and
3. pressing *Control-C* to copy the marked text to clipboard.

### Destination Location

In the next dialog (see Figure 6) the folder of the DDB programs has to be specified.

Click on the upper *Browse* button to open a folder selection dialog. In this dialog the folder where the DDBSP 2009 programs have been installed has to be selected.

The installation program will display an error message if an incorrect folder has been selected.

The *Destination Folder* is the folder where some small files and the uninstall information for the client setup are stored.

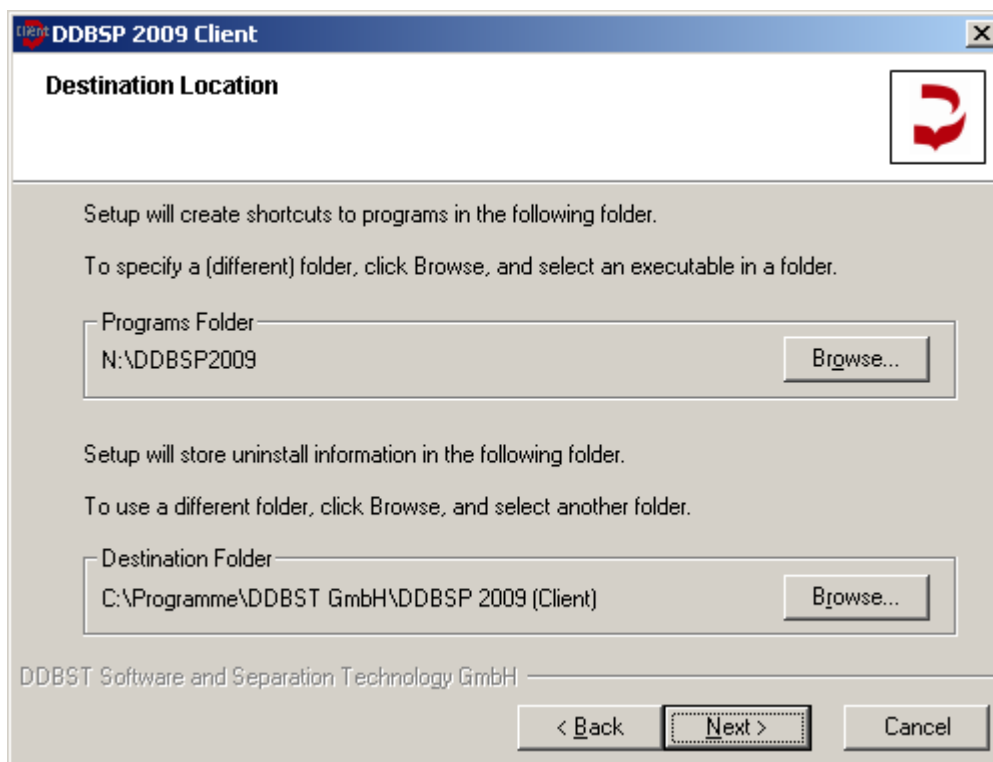


Figure 6

## DDB Configuration

The next dialog (see Figure 7) is used to determine the location of three important folders for a DDB/DDBSP system.

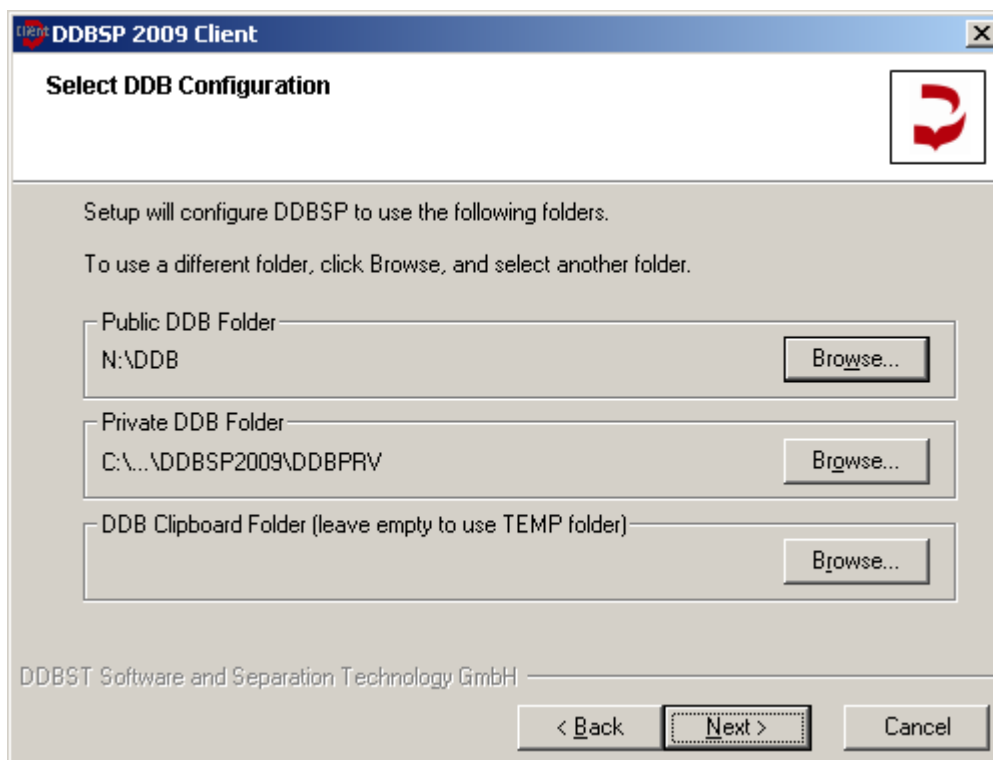


Figure 7

By selecting a *Browse* button a folder selection dialog is invoked. The *Public DDB Folder* contains all delivered database files like *VLE.DDB*. The *Private DDB Folder* is used to store

customer data. The *DDB Clipboard Folder* is the place for temporarily created files and must be writable for all DDBSP users.

If the clipboard folder is not specified (left empty) the Windows TEMP folder is used (which may be user specific).

The default location for the private DDB folder is a DDBSP 2009 specific subfolder of the global application data folder.

The setup won't allow you to continue until at least the *Public DDB Folder* is pointing to a valid folder. The other folders may point to non-existing directories which will be created by the setup program automatically.

If any of the specified folders are equal an error message will be displayed. The installation can not be continued until the folders are different.

## Select License Server

The next step in the installation is the setup of the license server connection (see Figure 8).

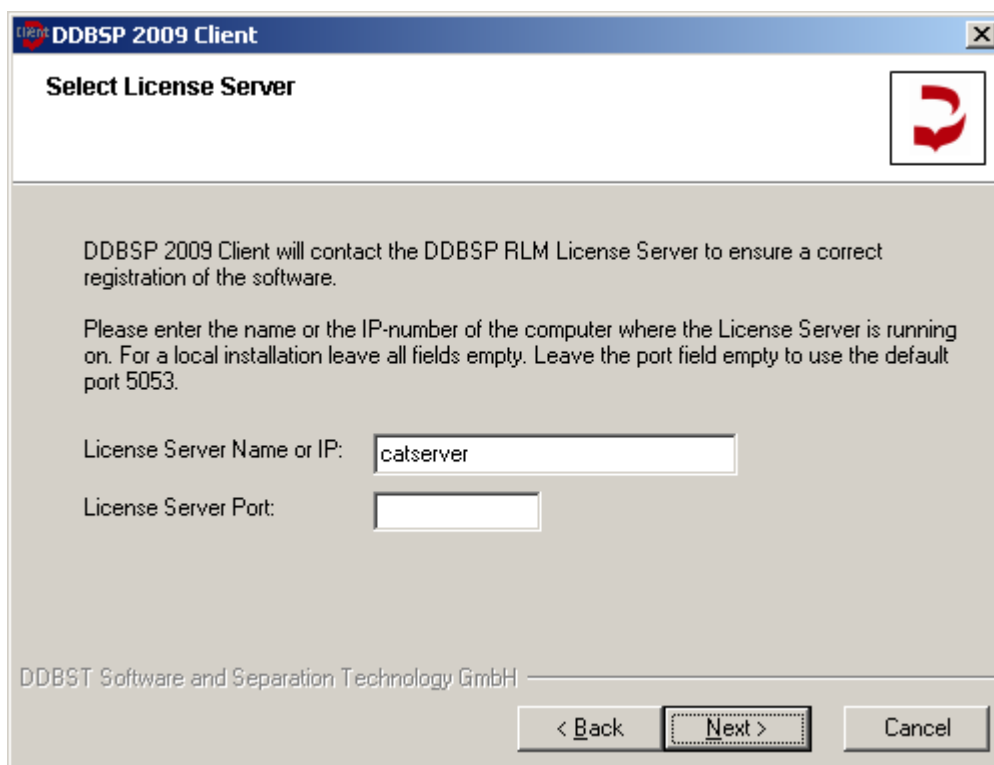


Figure 8

The location of the license server has been specified either by specifying the name or the IP address (IPv4) of the machine where the license server has been installed. The IP address is essentially a four byte number where the single bytes are values from 0 to 255. Please ask your network supervisor for the name or IP address of the license server machine. If the license server is installed on the same machine either "127.0.0.1" as server IP address or "localhost" as server name has to be used.

If you want to use the default port (5053) for the communication between application and license server then leave the field *License Server Port* empty.

Please note that the setup does not check if the server name or IP address is valid and points to an existing machine. In addition it is not checked if client and server use the same port. If any of the specification is incorrect the DDB programs won't work. But it is not necessary to re-install the programs since the license server specification can be modified later on by the *RLM*

*License Configuration* program. Use the page *Licenses* to review and change the license server location or manage local licenses. The program is located in *Additional* folder of the DDBSP program manager group.

## Select Program Manager Group

The next dialog (see Figure 9) allows the user to select a name for the program group that will be displayed in the Windows start menu.

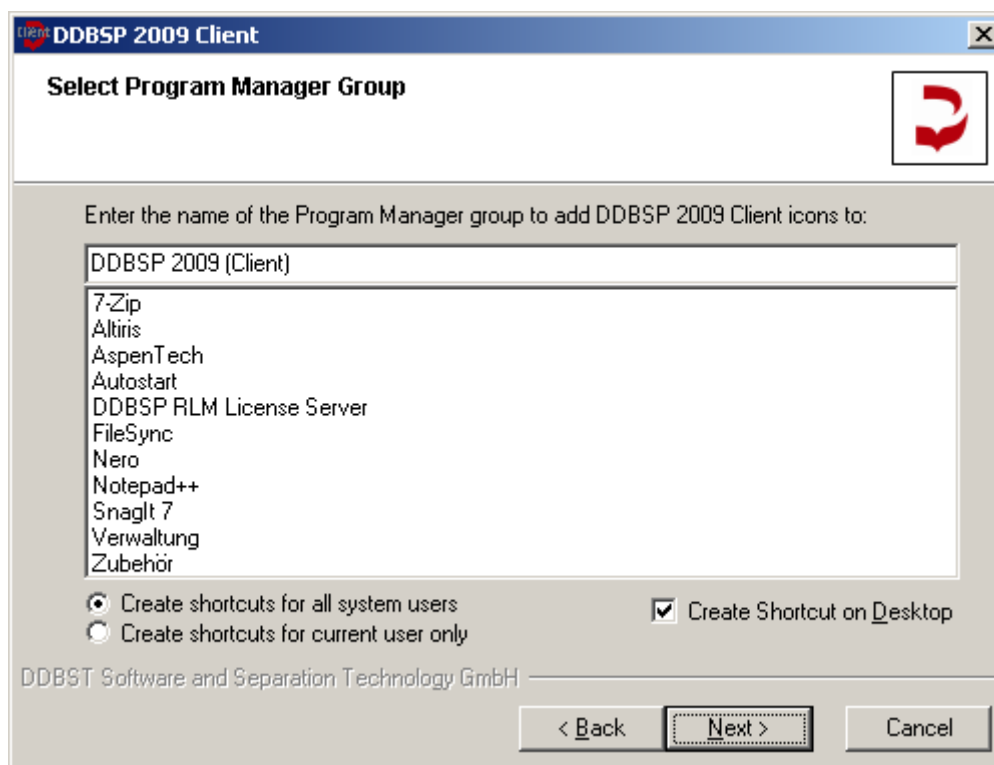


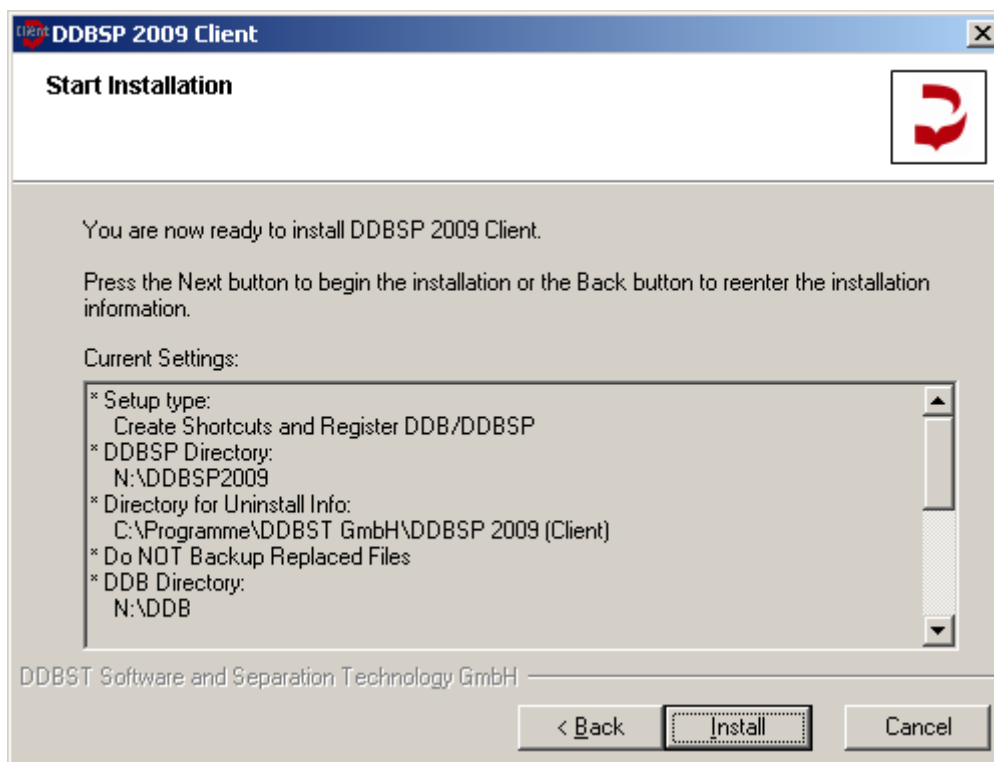
Figure 9

The option *Create shortcuts for all systems users* allows the user to place the program group in the “All users” branch of the Start menu which will make the installed programs visible for all users working on the computer. The *Create shortcuts for current user only* will place the program group in the “Current user” branch and makes it visible only for the currently logged-in user.

The *Create Shortcut on Desktop* option allows the user to place a shortcut to the program manager group on the desktop.

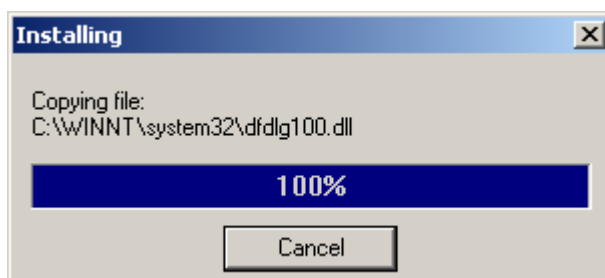
## Start Installation

The next dialog (see Figure 10) displays the most important options that have been selected during the setup process and should be read at least once in order to be sure not to have made a major mistake.



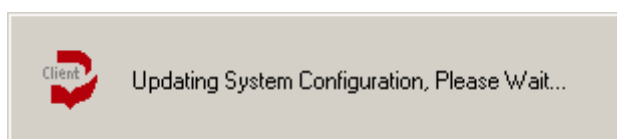
**Figure 10**

The “*Install*” button now starts the installation process as shown in Figure 11.



**Figure 11**

Windows has now to be made familiar with the DDB programs.



**Figure 12**

During this process (which can take several minutes) the programs and their components are registered in Windows.

## Installation Finished

The last dialog of the setup (see Figure 13) allows the user to set some options.

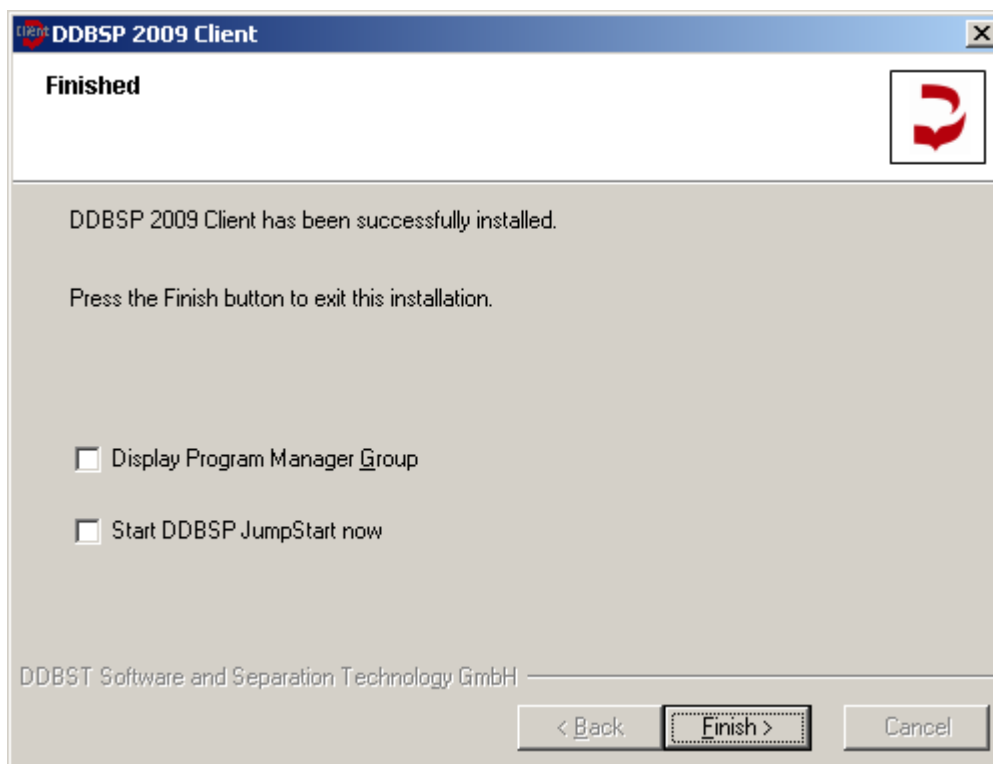


Figure 13

If *Display Program Manager Group* is checked the program manager group will be displayed immediately after finishing the setup.

The option *Start DDBSP JumpStart now* runs the *DDBSP Jump Start* program immediately.

## DDBSP Client 2009 – Silent Installation

This section refers mainly to system administrators who want to automate the install and uninstall procedure of the DDBSP Client. Please contact DDBST GmbH ([weinert@ddbst.de](mailto:weinert@ddbst.de) or [support@ddbst.de](mailto:support@ddbst.de)) for suggestions and remarks on this procedure.

### Silent Install

For an automated installation some settings can be specified in a text file which contains statement lines in format <key>=<value>.

The following keys are supported:

- DDBPTH  
This is the folder where the public DDB files (e.g. PURSEL.DEF) are installed. The default value is read in from the current settings, otherwise “C:\DDB” is used.
- DDBPRV  
This is the folder for private DDB files. A user must have write access to this folder in order to enter private experimental or component data. As default value the subfolder “DDBST GmbH\DDBSP2009\DDBPRV\” of the global application data folder is used.
- DDBSCR  
This is the folder for temporary files. A user must have write access to this folder. If the value is empty %TEMP% is used. The default value is empty.
- PROGDIR  
This is the folder where the DDBSP program files (e.g. DDBConfig.exe) are installed. The default value is empty.
- RLM\_NAME  
This variable holds the license server location. It can either be specified by the IP address (IPv4) or by the name of the server computer. The default value is empty.
- RLM\_PORT  
This variable can be used to specify the port for the communication between client and license server. The default value is empty.

The text file containing the installation settings is specified using the command line parameter “/M”, furthermore “/S” has to be specified for the silent installation:

```
"DDBSP 2009-client.exe" /S /M=<config_file>
```

### Example

DDB/DDBSP has been installed with “N:\DDBMAIN\DDB” as public DDB folder and “N:\DDBMAIN\DDBSP2009” as folder for the program files. The license server has the IP number “192.168.1.100” and communicates on port 34521.

The client is installed using “F:\DDBPRV\” as private DDB folder and “F:\DDBSCR\” as temporary folder. Then the text file *config\_client.txt* has the following contents:

```
DDBPTH=N:\DDBMAIN\DDB\  
DDBPRV=F:\DDBPRV\  
DDBSCR=F:\DDBSCR\  
PROGDIR=N:\DDBMAIN\DDBSP2009\  
RLM_NAME=192.168.1.100  
RLM_PORT=34521
```

The silent installation is started using the following program call:

```
"DDBSP 2009-Client.exe" /S /M=".\\config_client.txt"
```

During the installation a little DDBST symbol is displayed in the tray bar. Error messages are written into a file called *error.txt* in the installation folder.

## **Silent Uninstall**

DDBSP Client can be silently removed using the following program call:

```
"<INSTFOLDER>\unwise.exe" /S/U "<INSTFOLDER>\INSTALL.LOG"
```

## **Example**

DDBSP Client 2009 has been installed in the folder

```
"C:\Program Files\DDBST GmbH\DDBSP 2009 (Client)"
```

Create a batch file named *client\_remove.bat* containing the following lines:

```
@ECHO OFF
SET CLIENTPATH=C:\Program Files\DDBST GmbH\DDBSP 2009 (Client)
"%CLIENTPATH%\UNWISE.EXE" /S/U "%CLIENTPATH%\INSTALL.LOG"
```

To silently remove the software just call *client\_remove.bat*.