

DDB/DDBSP 2009 – Installation Guide

Contents

Note on DDB Configuration Change in DDBSP 2008.....	1
Installation Requirements.....	1
Installation of DDB/DDBSP.....	2
Welcome.....	2
License Agreement.....	3
Destination Location.....	4
DDB Configuration.....	4
Select License Server.....	5
Backup Replaced Files.....	6
Select Program Manager Group.....	6
Start Installation.....	7
Installation Finished.....	8
DDB/DDBSP 2009 – Silent Installation.....	10
Silent Install.....	10
Example.....	11
Silent Uninstall.....	11
Example.....	11

Note on DDB Configuration Change in DDBSP 2008

Up to DDBSP 2007 the DDB configuration was stored either in the file C:\DDB.CFG or in the registry and was used by all DDBSP versions. Since DDBSP 2008 the behavior has changed. Now each DDBSP version is using its own DDB configuration. It is possible to have more than one version of DDBSP and DDB installed on the same system. Changing the DDB configuration in one version will no longer change the DDB configuration in other versions.

Installation Requirements

To install DDB/DDBSP administrative rights are required. On systems with the *User Access Control* (UAC) turned on the setup will be started with the option “run as administrator”. On *Terminal Server* editions the setup has to be started from the “add/remove programs” dialog of the control panel.

DDB/DDBSP needs a valid license to run. The license can reside on the local computer (single-user license) or can be served by a license server (concurrent license). The installation of a license is described in the *RLM License Configuration* documentation.

Installation of DDB/DDBSP

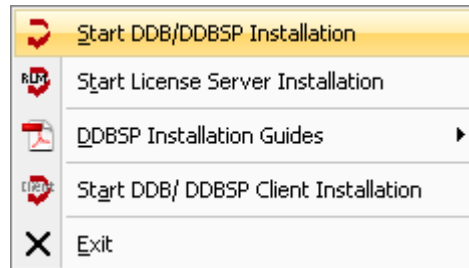


Figure 1

The setup of the DDB/DDBSP is started by selecting *Start DDB/DDBSP Installation* within the “DDBSP Setup“ (see Figure 1), which is started automatically when the CD is inserted, and the Windows AutoPlay-mode is enabled. If the AutoPlay-mode is disabled the main setup can be started by running the program “SetupStarter.exe” in the root directory of the CD.

In **single-user** setups the options *Start License Server Installation* and *Start DDB/DDBSP Client Installation* are not available.

The installation guides can be displayed using the *DDBSP Installation Guides* sub-menu.

Welcome

The setup starts with the “Welcome” screen shown in Figure 2. The installation program displays a warning that all other programs should be shut down. The warning can be ignored only if no other DDB program is currently active. DDB programs should be shut down before continuing.

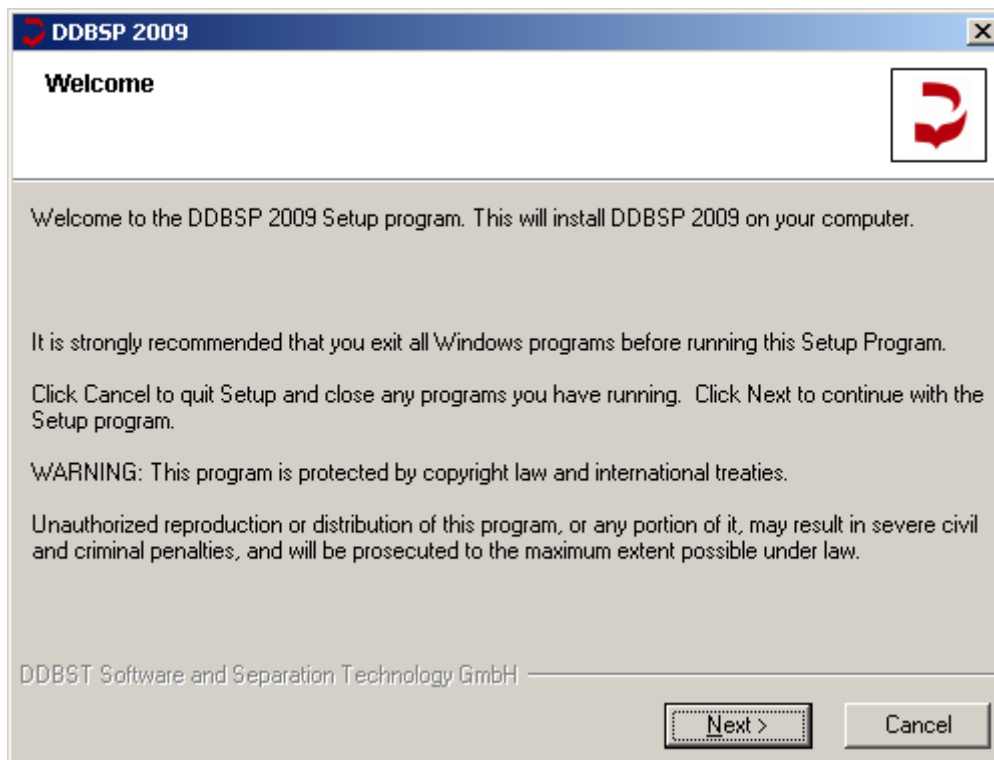


Figure 2

If any existing edition of DDBSP 2009 is already installed on the system the setup will abort with an error message when the *Next* button is pressed.

License Agreement

The next step in the setup process is the display of a license agreement (see Figure 3).



Figure 3

1. Read the agreement carefully and accept the license agreement by clicking the radio button as shown in Figure 5.
2. Click the now enabled *Next* button to proceed with the next step of the installation.

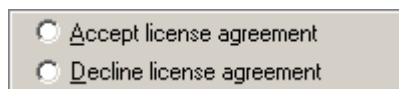


Figure 4

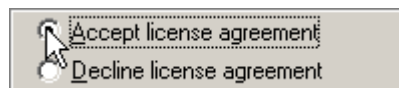


Figure 5

It is also possible to copy the text to the Windows clipboard by

1. clicking in the text area,
2. pressing *Control-A* to select the entire text and
3. pressing *Control-C* to copy the marked text to clipboard.

Destination Location

The next dialog (Figure 6) asks for the programs folder.

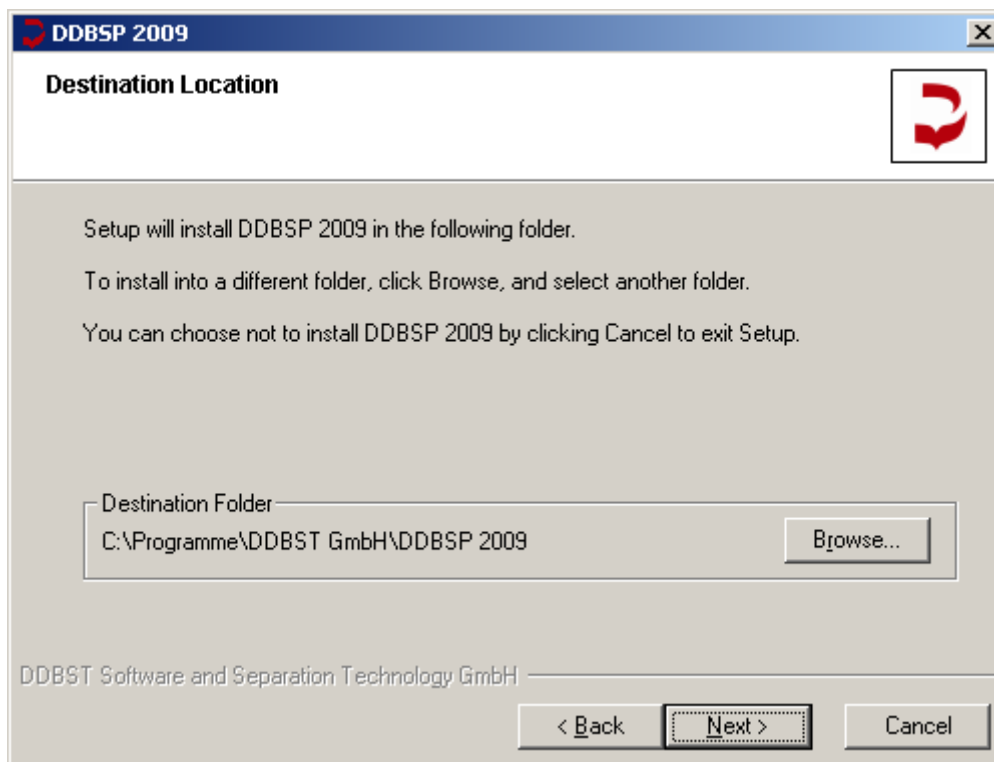


Figure 6

DDB Configuration

The setup now displays the "DDB Configuration" dialog (Figure 7).

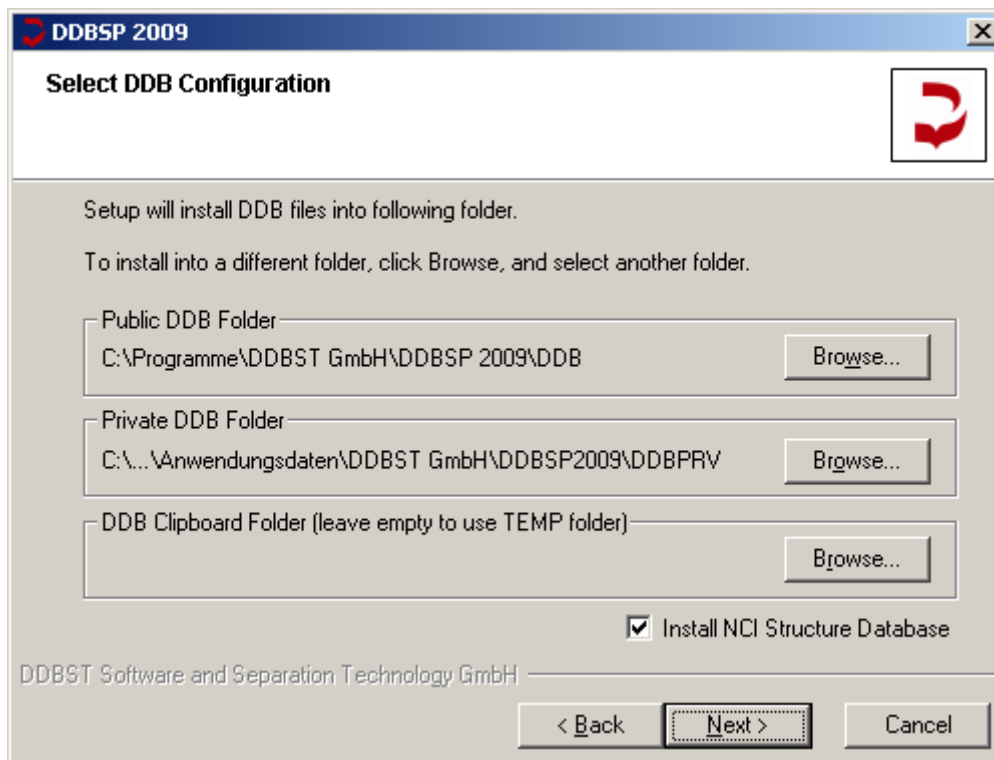


Figure 7

The dialog is used to specify the path to the folder where the public DDB files will be installed and the paths to the private DDB and the DDB specific clipboard folder. Non-existing directories will be created.

If the clipboard folder is not specified (left empty) the Windows TEMP folder is used (which may be user specific). The clipboard folder must be writable for all DDBSP users.

The default location for the public DDB folder is a sub-folder of the programs folder. The default location for the private DDB folder is a DDBSP 2009 specific sub-folder of the global application data folder.

In the **Explorer Edition** only the clipboard folder can be selected.

All three folders must be different. Otherwise an error message will be displayed. The installation can not be continued until the folders are different.

If *Artist* is part of the setup the optional *NCI structure database* can be installed. If the option is not activated the database file “NCIStructures.ddb” can be copied to the DDB folder manually later. The file is located in the *Additional* folder on the CD. The structure database is omitted in the **Teaching Editions** and the **Explorer Edition**.

The folders can be changed by selecting the *Browse* buttons.

If the selected folder already exists the files in that folder would be overwritten. Therefore the setup will ask for confirmation.

Select License Server

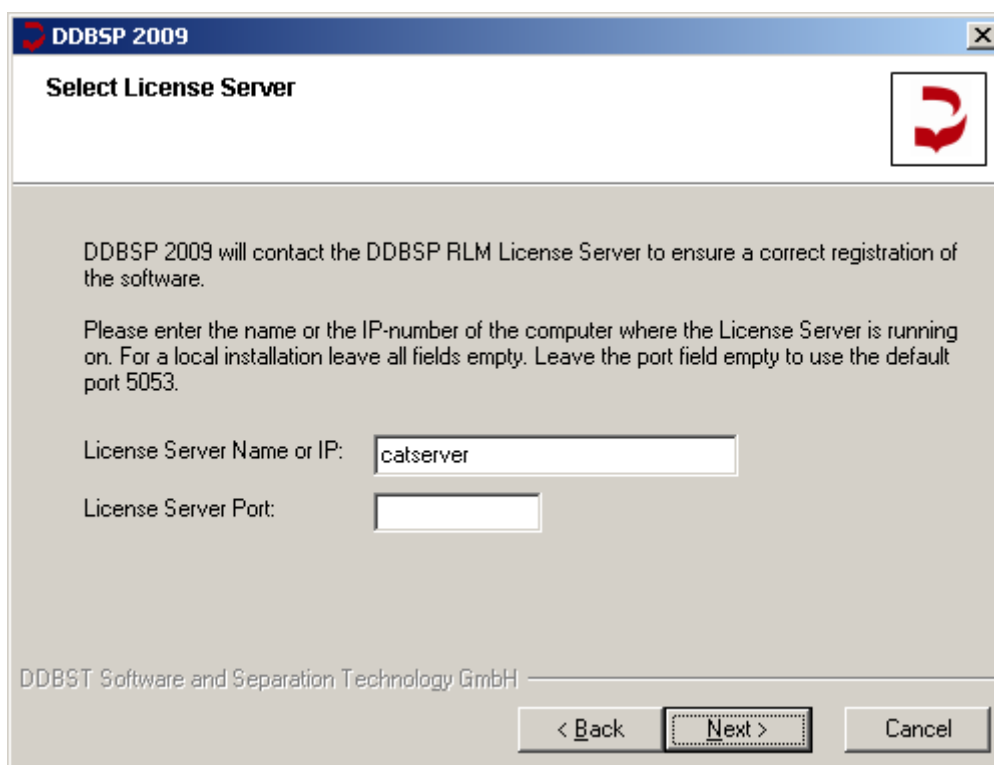


Figure 8

The “Select License Server” dialog (see Figure 8) will come up next. For users of a **single-user** license all entries should be left empty. For users of a **concurrent** license the location of the license server has to be specified either by specifying the name or the IP address (IPv4) of the machine where the license server has been installed. The IP address is essentially a four byte number where the single bytes are values from 0 to 255. Please ask your network supervisor for the name or IP address of the license server machine. If the license server is installed on

the same machine either “127.0.0.1” as server IP address or “localhost” as server name has to be used.

If you want to use the default port (5053) for the communication between application and license server then leave the field *License Server Port* empty.

Please note that the setup does not check if the server name or IP address is valid and points to an existing machine. In addition it is not checked if client and server use the same port. If any of the specification is incorrect the DDB programs won't work. But it is not necessary to re-install the programs since the license server specification can be modified later on by the *RLM License Configuration* program. Use the page *Licenses* to review and change the license server location or manage local licenses. The program is located in *Additional* folder of the DDBSP program manager group.

Backup Replaced Files

The next question (see Figure 9) is whether a backup of overwritten files is wanted.

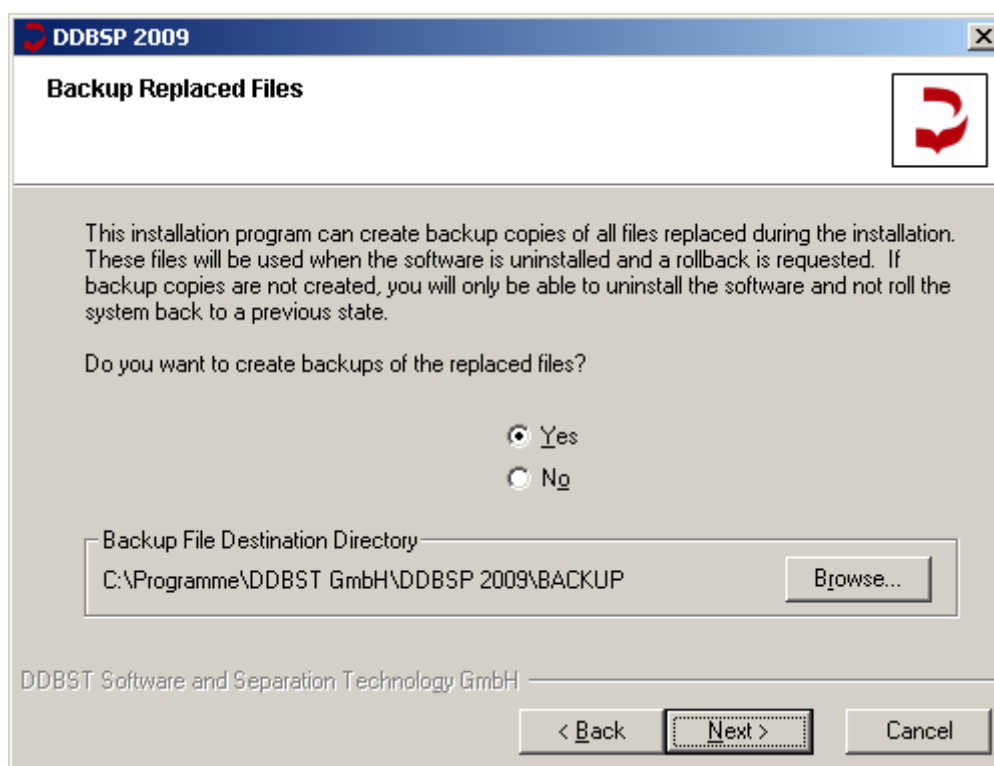


Figure 9

If the answer is *Yes* it is possible to select a folder for the backup files. The standard directory is a sub-folder of the programs folder.

The backup allows the user to restore the files that will be replaced by the current setup when the new programs are uninstalled and it allows an immediate recovery of the previously used programs when the current setup fails.

Select Program Manager Group

The next dialog (see Figure 10) allows the user to select a name for the program group that will be displayed in the Windows start menu.

The option *Create shortcuts for all systems users* allows the user to place the program group in the *All users* branch of the Start menu which will make the installed programs visible for all users working on the computer. The *Create shortcuts for current user only* will place the

program group in the *Current user* branch and makes it visible only for the currently logged-in user.

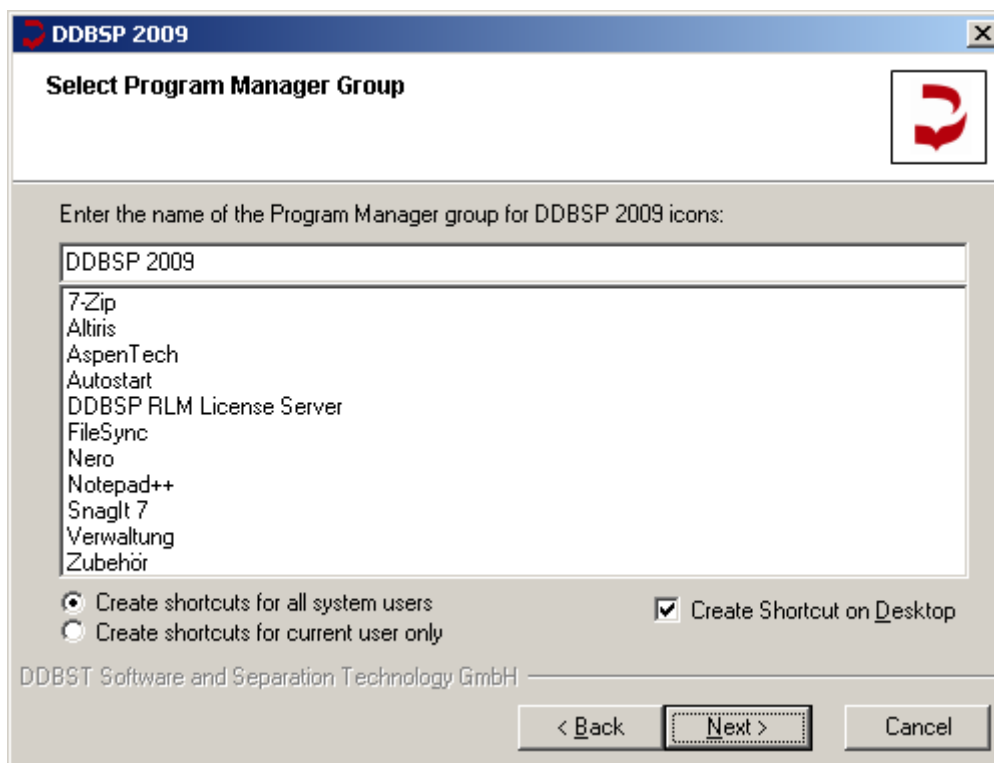


Figure 10

The *Create Shortcut on Desktop* option allows the user to place a shortcut to the program manager group on the desktop.

Start Installation

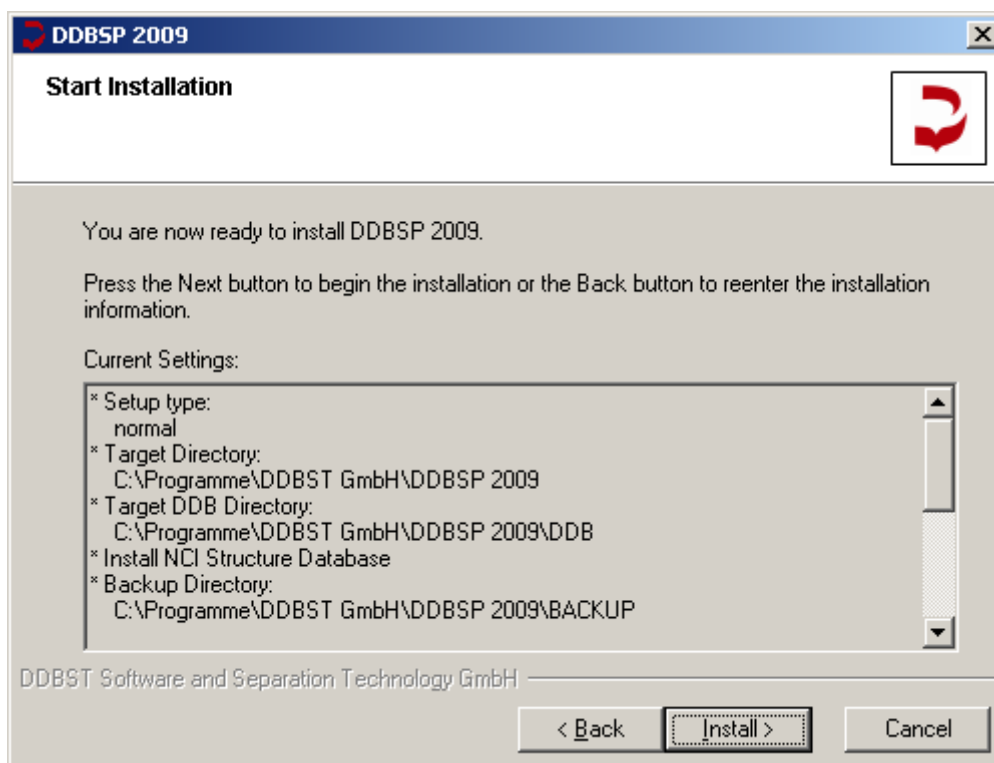


Figure 11

The next dialog (Figure 11) displays all important options that have been selected during the setup process and should be read at least once in order to be sure not to have made a major mistake.

The *Install* button now starts the installation process as shown in Figure 12.

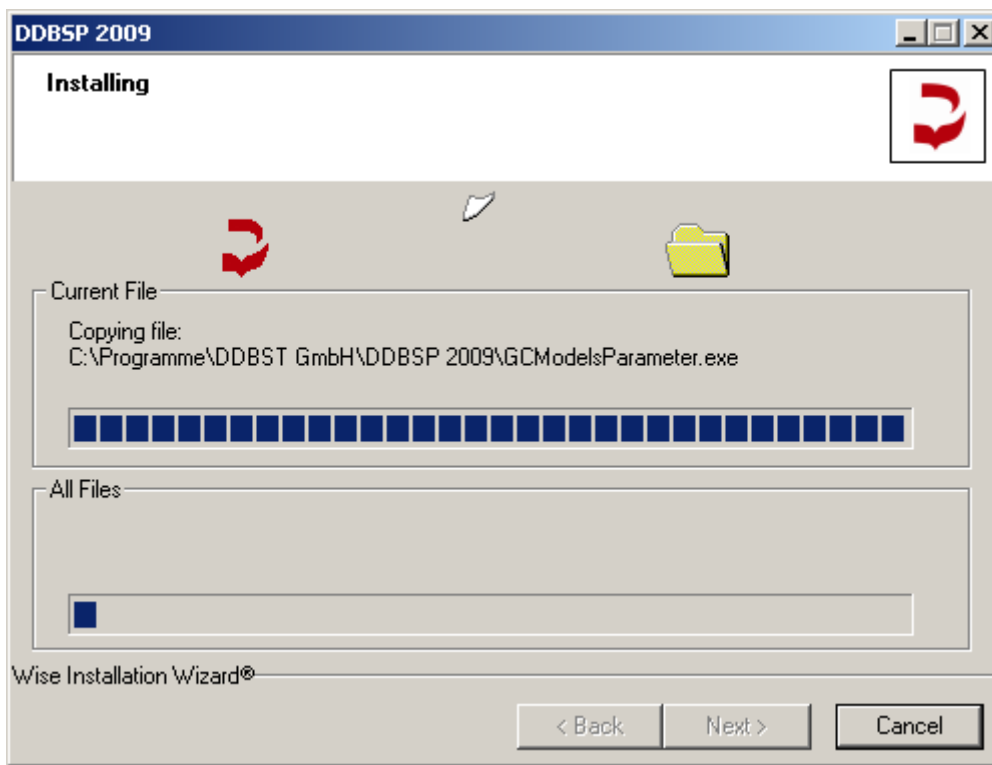


Figure 12

After installing all the programs and database files Windows has to be made familiar with the DDB programs (see Figure 13).

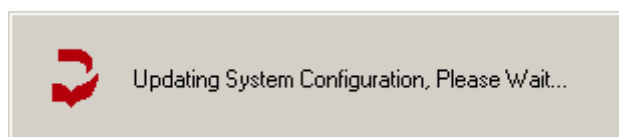


Figure 13

During this process which can take several minutes the single programs and their components are registered in Windows.

Installation Finished

The last dialog of the setup allows the user to set some options (see Figure 14).

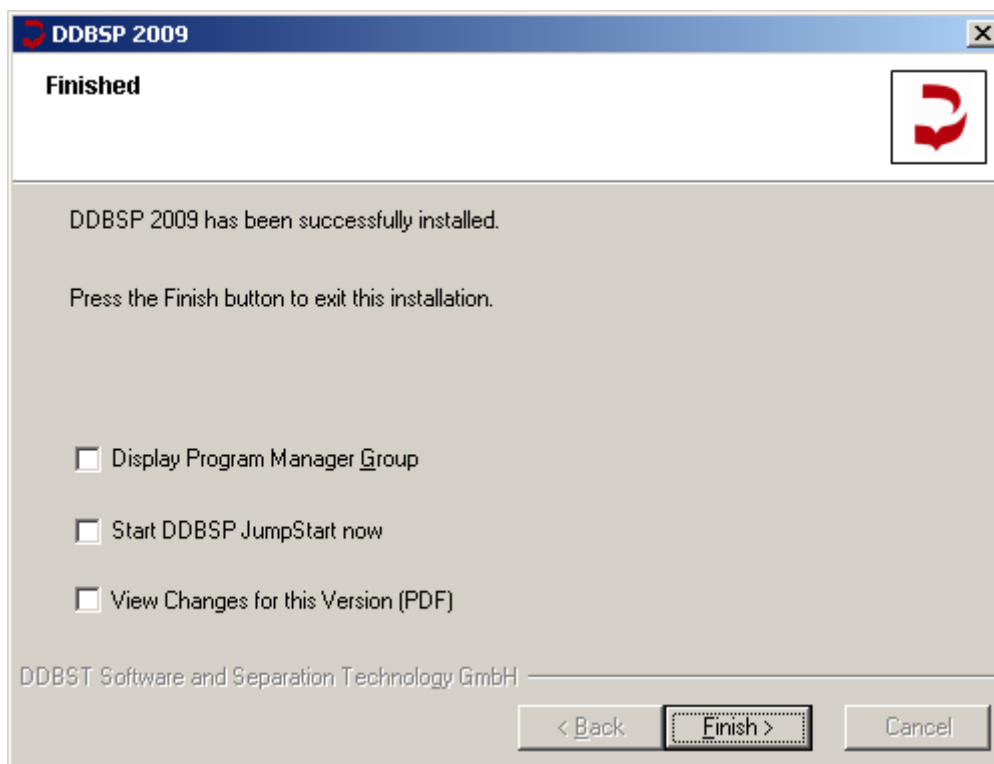


Figure 14

If the option *Display Program Manager Group* is activated the program manager group will be displayed immediately after finishing the setup.

The option *Start DDBSP JumpStart now* runs the DDBSPJumpStart program immediately.

The option *View Changes for this Version (PDF)* has to be activated to see the changes and progress for the current version.

DDB/DDBSP 2009 – Silent Installation

This section refers mainly to system administrators who want to automate the install and uninstall procedure of DDB/DDBSP. Please contact DDBST GmbH (weinert@ddbst.de or support@ddbst.de) for suggestions and remarks on this procedure.

Silent Install

For an automated installation some settings can be specified in a text file which contains statement lines in format <key>=<value>.

The following keys are supported:

- **DDBPTH**
This is the installation folder for the public DDB files. The default value is the subfolder “DDB\” of MAINDIR.
- **DDBPRV**
This is the folder for private DDB files. A user must have write access to this folder in order to enter private experimental or component data. The default value is the subfolder “DDBST GmbH\DDBSP2009\DDBPRV\” of the global application data folder.
- **DDBSCR**
This is the folder for temporary files. A user must have write access to this folder. If the value is empty %TEMP% is used. The default value is empty.
- **DOINSTALLNCI**
If *Artist* is part of the program package an additional structure database is located in the folder “MainSetup\Additional” on the CD. The installation is optional because the file size is about 225 MB. Set “DOINSTALLNCI=A” to have the database installed. The default value is “A”.
- **MAINDIR**
This is the name of the target folder for the program files. The folder is located as subfolder of %ProgramFiles%. The default value is “DDBST GmbH\DDPSP 2009”.
- **GROUP**
This is the name of the DDBSP program group. The default value is “DDBSP 2009”.
- **ASP_CONFIDENT**
The contents of this variable is written as comment on top of each Aspen-INP file created by DDBSP. To get multi-line text the occurrence of “\r” will be handled as line break. The default value is empty.
- **ASP_PURE**
This variable contains the Aspen PURE databases which are used in Aspen-INP export. The entries have to be separated by semicolon. The default value is “PURE10;INORGANIC;AQUEOUS”.
- **RLM_NAME**
This variable holds the license server location. It can either be specified by the IP address (IPv4) or by the name of the server computer. The default value is empty.
- **RLM_PORT**
This variable can be used to specify the port for the communication between client and license server. The default value is empty.

The text file containing the installation settings is specified using the command line parameter “/M”, furthermore “/S” has to be specified for the silent installation:

```
MainSetup.exe /S /M=<config_file>
```

Example

DDB/DDBSP is installed with

- public and private database folder and temporary folder as sub-folder of “C:\DDBSP”
- default installation folder for the program files and default program group
- not installing NCI structure database
- use “myserver” as license server on port 34521
- multi-line Aspen-INP header and Aspen PURE databases PURE20, INORGANIC and AQUEOUS

Contents of text file *config_main.txt*:

```
DDBPTH=C:\DDBSP\DDB\  
DDBPRV=C:\DDBSP\PRIVATE\  
DDBSCR=C:\DDBSP\SCRATCH\  
DOINSTALLNCI=  
RLM_NAME=myserver  
RLM_PORT=34521  
ASP_CONFIDENT=Note: This file contains\rConfidential Information.  
ASP_PURE=PURE20;INORGANIC;AQUEOUS
```

Please note that ASP_CONFIDENT must be specified within one single line.

The silent installation is started using the following program call:

```
MainSetup.exe /S /M=".\config_main.txt"
```

During the installation a little DDBST symbol is displayed in the tray bar. Error messages are written into a file called *error.txt* in the installation folder.

Silent Uninstall

DDB/DDBSP 2009 can be silently removed using the following program call:

```
"<INSTFOLDER>\uninst.exe" /S -apptitle "DDBSP 2009"
```

Example

DDB/DDBSP 2009 has been installed in the folder

```
"C:\Program Files\DDBST GmbH\DDBSP 2009"
```

To silently remove the software call

```
"C:\Program Files\DDBST GmbH\DDBSP 2009\uninst.exe" /S -apptitle "DDBSP 2009"
```