

# Entrainer Selection

**DDBSP** - Dortmund Data Bank Software Package



**DDBST**

DORTMUND DATA BANK  
SOFTWARE & SEPARATION  
TECHNOLOGY

DDBST Software & Separation Technology GmbH

Marie-Curie-Straße 10

D-26129 Oldenburg

Tel.: +49 (0) 441 361819 0

Fax: +49 (0) 441 361819 10

E-Mail: [support@dbst.com](mailto:support@dbst.com)

Web: <http://www.dbst.com>

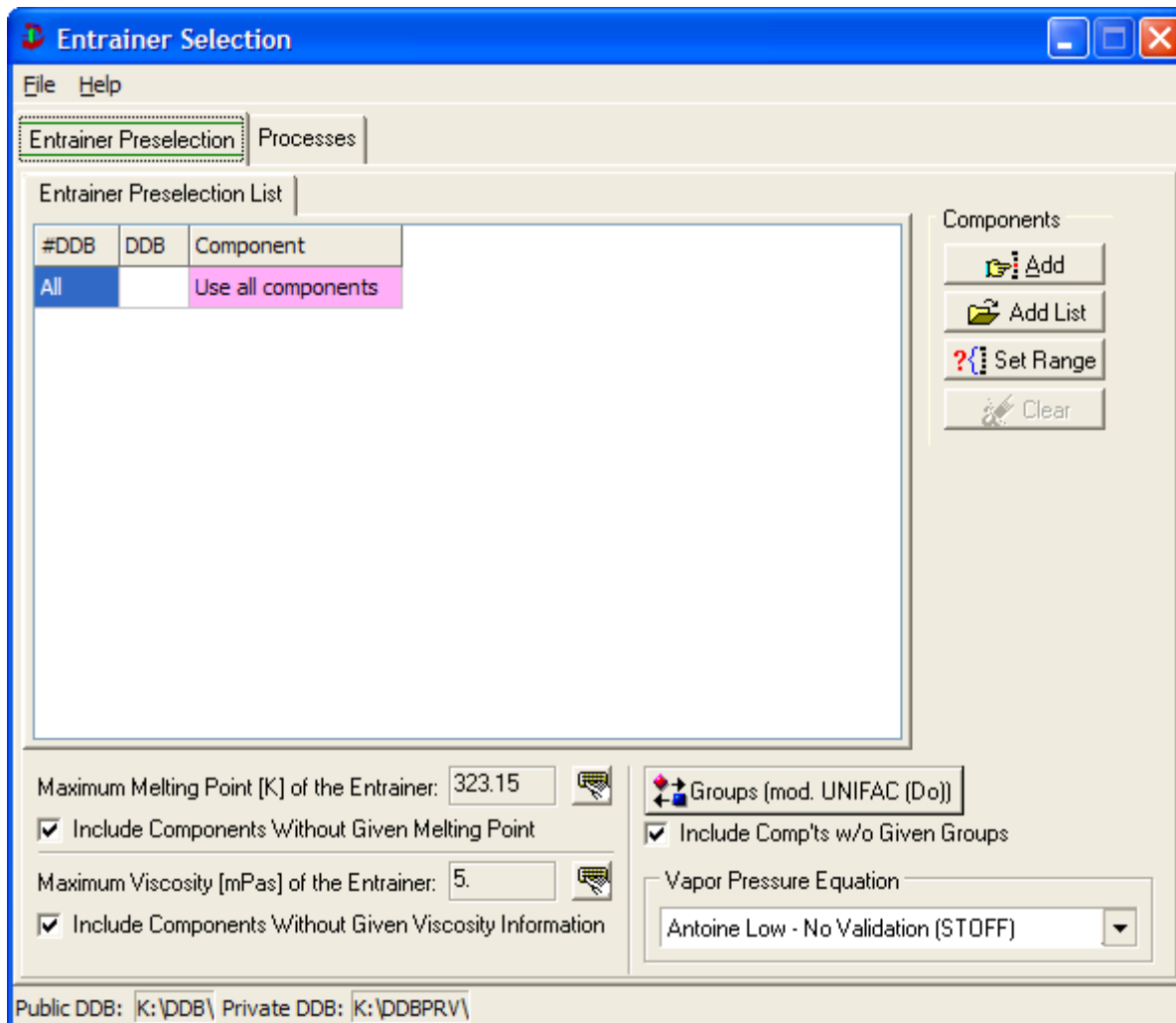
## Contents

Introduction.....	3
Common Settings.....	5
Proposal of Alternative Separation Processes.....	7
Extractive Distillation.....	8
Azeotropic Distillation.....	9
Liquid-Liquid Extraction.....	10
Typical Result.....	11
Absorption.....	12
Introduction.....	12
Program Description .....	13
Data Sources.....	15
Gas Solubilities Data Bank.....	15
Vapor-liquid Equilibrium Data Bank.....	15
Predictive Soave-Redlich-Kwong.....	15
Result15	
Entrainer Results.....	16
Result for Extractive Distillation, Azeotropic Distillation, Extraction, and Selectivity.....	16
Limited Views.....	16
Sorting .....	17
Links .....	17
Result for Absorption.....	18
Limited Views .....	18
Sorting .....	18
Links .....	18
Literature.....	19

## Introduction

Although conventional distillation is the most important industrial separation process, there are situations where solvent-enhanced separation, e. g. azeotropic distillation, extractive distillation, liquid-liquid extraction, and absorption is a more appropriate choice. Therefore a software package was developed in order to find a suitable solvent (entrainer) for the above mentioned separation processes. The entrainer selection is based on azeotropic data, activity coefficients at infinite dilution, liquid-liquid equilibrium (LLE) and gas solubility (GLE) data. These data are taken from factual data banks as well as from thermodynamic models.

The program starts with an “Entrainer Preselection” page.



The dialog offers the possibility to specify the component range. This is useful, if the azeotropic data are calculated with a thermodynamic model. Instead of calculating the homogeneous and heterogeneous points for many thousands of components, it can be chosen between a component range (e.g. Components 1 – 500) and a component list. The component list is a “\*.stl” file, which can be easily edited e. g. in ComponentSelection.

#DDB	DDB	Component
17	DDB	Aniline
130	DDB	2-Methylphenol
174	DDB	Water
408	DDB	1-Naphthol
608	DDB	m-Nitrophenol
863	DDB	o-Nitroacetanilide

Components

Add

Add List

Set Range

Clear

The maximum melting point and the maximum viscosity allow to exclude components with non-matching conditions but this criterion fails if no melting point or viscosities (Andrade parameters) are available. For all separation processes the maximum viscosity and the maximum melting point have to be declared. The knowledge of the melting point is necessary to avoid a crystallization of the entrainer. Low viscosities help to enhance the mass

Maximum Melting Point [K] of the Entrainer: 323.15

Include Components Without Given Melting Point

Maximum Viscosity [mPas] of the Entrainer: 5

Include Components Without Given Viscosity Information

transfer and minimize the energy costs (pumping costs).

Groups (mod. UNIFAC (Do))

Include Comp'ts w/o Given Groups

The "Groups" button allows to exclude components by their mod. UNIFAC (Dortmund) groups. These groups can be seen as functional groups.

Vapor Pressure Equation

Antoine Low - No Validation (STOFF)

The selection box allows to switch the pure component vapor pressure equation used. Possible entries are

- Antoine Low - No Validation (STOFF)
- Antoine Low - No Validation (ParamDB)
- Antoine Automatic (ParamDB)
- Cox (ParamDB)
- DIPPR (ParamDB)
- Wagner (ParamDB)

Figure 2: Vapor Pressure Equations

Group Selection

Okay Cancel Include All

- 1 CH2
- 2 C=C
- 3 ACH
- 4 ACCH2
- 5 OH
- 6 CH3OH
- 7 H2O
- 8 ACOH
- 9 CH2CO
- 10 CHO
- 11 CCOO
- 12 HCOO
- 13 CH2O
- 14 CH2NH2
- 15 CH2NH
- 16 (C) 3N
- 17 ACNH2
- 18 PYRIDINE
- 19 CH2CN
- 20 COOH
- 21 CCL
- 22 CCL2
- 23 CCL3
- 24 CCL4

Figure 1: UNIFAC Functional Groups

## Common Settings

The processes dialog contains many identical controls for four of the five processes. Only the *Absorption* page is different.

After specifying the binary separation problem (component 1 and 2), the vapor pressures or boiling points of the components are shown, depending on the chosen system temperature or pressure. The component selection ( Component 1 ) is performed by the (DDB-) standard program ComponentSelection. The button allows to perform a search in the Dortmund Data Bank for the pure component properties of the component.

The data sources for the azeotropic data and the activity coefficients at infinite dilution have to be chosen. The LLE data are currently always taken from the Dortmund

Data Bank. If experimental data are selected, a linear regression is used to estimate the values for the separation factor or selectivity and the azeotropic temperature for the given system pressure. The calculation with four different thermodynamic models (group contribution methods) is possible: UNIFAC, mod. UNIFAC (Do), mod. UNIFAC (Ly) and ASOG.

Depending on the chosen separation process, the user has to define further input parameters:

<i>Process</i>	<i>Input</i>
<b>Extractive Distillation</b>	minimum separation factor at infinite dilution, boiling point (isobaric case) or vapor pressure difference (isothermal case) between entrainer and binary system
<b>Azeotropic Distillation</b>	selection of the new introduced azeotrope (binary or ternary), model for the calculation of the virial coefficients
<b>Extraction</b>	minimum selectivity at infinite dilution

If the program is finished the data finally used are stored and automatically entered in the next run.

## Proposal of Alternative Separation Processes

In some cases the components can be separated without introducing a third component. The program package first checks the VLE behavior. After the evaluation a proposal with the alternative separation process is given before the entrainer selection starts.

- zeotropic behavior  $\Rightarrow$  ordinary distillation
- formation of a heterogeneous azeotrope  $\Rightarrow$  heterogeneous azeotropic distillation
- zeotropy at high/low pressures  $\Rightarrow$  vacuum (pressure) distillation
- strong pressure dependence of azeotropic composition  $\Rightarrow$  pressure swing distillation

## Extractive Distillation

With the help of saturation vapor pressures  $P_i^s$  and activity coefficients at infinite dilution  $\gamma_i^\infty$  the separation factor at infinite dilution  $\alpha_{ij}^\infty$  for the binary system can be calculated:

$$\alpha_{12}^\infty = \frac{\gamma_1^\infty P_1^s}{\gamma_2^\infty P_2^s}$$

The entrainer should alter the activity coefficients of the components to a different extend, in order to reach separation factors far from 1. Since the entrainer should not introduce new azeotropes, the boiling point or vapor pressure difference between entrainer and binary mixture must be sufficient. For a convenient recovery of the entrainer its boiling point must usually be sufficiently higher (e.g.,  $\Delta T = 40$  K) than for any component of the mixture to be separated. Recent investigations have demonstrated the use of low-boiling solvents in so-called "reverse extractive distillation" processes, but as the amount of solvent has to be increased enormously to ensure a sufficient liquid concentration of the entrainer. Moreover, the enthalpy of evaporation affects the energy balance of the process negatively. Thus, this kind of process will probably only be competitive when no suitable high-boiling solvent is available.

It is also possible to switch off the boiling point/vapor pressure condition when the user puts in the value 0. This allows to find in one step entrainers both for extractive distillation and reverse extractive distillation.

If the criteria melting point, viscosity and boiling point or vapor pressure difference are fulfilled, all solvents are chosen which show a sufficient separation factor. Additionally it will be checked, if the new solvents show zeotropic behavior with the components to be separated.

## Azeotropic Distillation

For the azeotropic distillation, there are two different processes available. On the one hand, entrainers are chosen which introduce at least one further extreme-boiling binary azeotrope. On the other hand, entrainers are selected which introduce a low-boiling ternary heterogeneous azeotrope.

Tab.1 Criteria for solvents when components 1 and 2 form a pressure maximum azeotrope or no azeotrope.

Case A	Case B
<ul style="list-style-type: none"> <li>• Introduction of at least one further binary azeotrope with pressure maximum</li> <li>• homogeneous oder heterogeneous</li> <li>• for a given pressure: <math>T_{az.1-3}</math> or <math>T_{az.2-3} &lt; T_{az.1-2} - 2.0</math> K</li> <li>• for a given temperature: <math>P_{az.1-3}</math> or <math>P_{az.2-3} &gt; P_{az.1-2} + 20</math> mmHg</li> </ul>	<ul style="list-style-type: none"> <li>• Introduction of a low-boiling ternary azeotrop</li> <li>• heterogeneous</li> <li>• for a given pressure: <math>T_{az.1-2-3} &lt; T_{az.1-2} - 2.0</math> K</li> <li>• for a given temperature: <math>P_{az.1-2-3} &gt; P_{az.1-2} + 20</math> mmHg</li> </ul>

Tab.2 Criteria for solvents when components 1 and 2 form a pressure minimum azeotrope

Case A	Case B
<ul style="list-style-type: none"> <li>• Introduction of at least one further binary azeotrope with pressure minimum</li> <li>• homogeneous</li> <li>• for a given pressure: <math>T_{az.1-3}</math> or <math>T_{az.2-3} &lt; T_{az.1-2} + 2.0</math> K</li> <li>• for a given temperature: <math>P_{az.1-3}</math> or <math>P_{az.2-3} &gt; P_{az.1-2} - 20</math> mmHg</li> </ul>	<p>there are no ternary heterogeneous azeotropes with pressure minimum!</p> <p>Program stops.</p>

In all cases, the method for calculating the fugacity coefficients must be specified (ideal, Tsionopoulos or Hayden and O'Connell), in order to consider the vapor phase reality.

## Liquid-Liquid Extraction

The azeotropic data source is only required for checking the azeotropy of system 1–2 (components to be separated). In analogy to the separation factor for the extractive distillation, the extraction process demands a

minimum selectivity  $S_{ij}^\infty = \frac{\gamma_i^\infty}{\gamma_j^\infty}$  of the entrainer at infinite dilution:  $S_{ij} \gg 1$  or  $S_{ij} \ll 1$

For selectivities higher than 1 ( $S_{ij} \gg 1$ ), the solubility of component 1 in the extractive agent (component 3) is higher than the solubility of component 2 in the solvent. In this case, the binary system 1 – 3 should have a miscibility gap. This is checked by using the LLE data bank. If LLE data are stored, the data set nearest to the system temperature is chosen, when the following options are fulfilled:

$$|T_{LLE} - T_{system}| \leq 10K \quad \text{and} \quad P_{LLE} < 50 \text{ bar}$$

It is also possible to show binary and ternary LLE-diagrams for all selected solvents. Figure 2 shows this for the system water – ethanol – benzene.

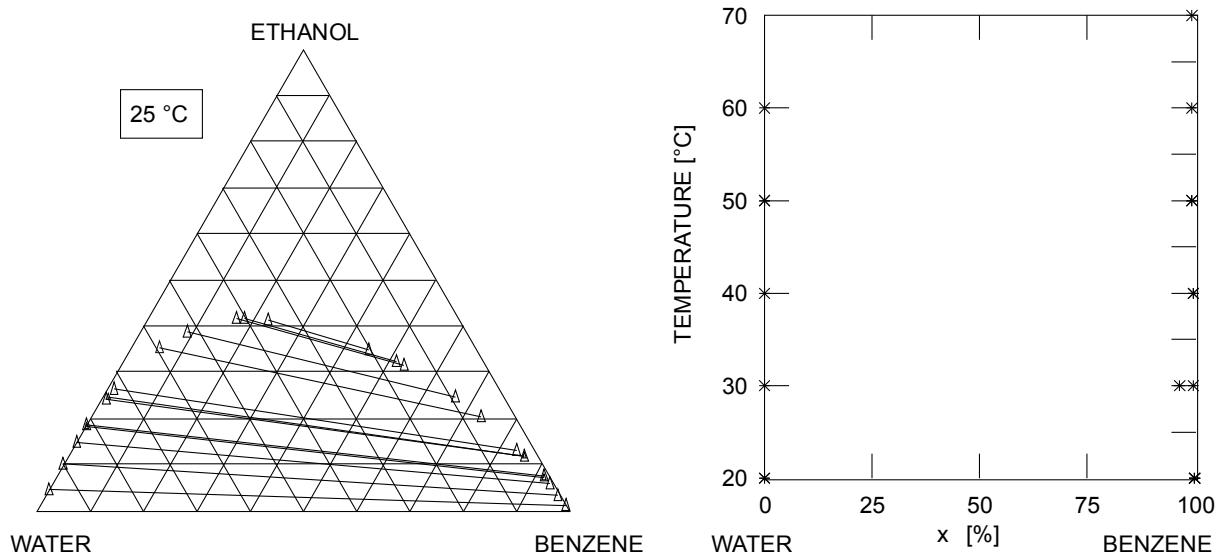


Fig.2 LLE data for the system water – ethanol – benzene

A good method for estimating the solubility (capacity) of the components to be separated is using activity coefficients at infinite dilution. The reciprocal value of the activity coefficient at infinite dilution can be taken as a measure for the capacity  $k_i^\infty$ :

$$k_i^\infty = \frac{1}{\gamma_i^\infty}$$

The higher the capacity the more of the component to be extracted can be taken with the solvent. Since it is desirable to have both a high selectivity and a high capacity, it is possible to compare all the selected solvents in a capacity – selectivity diagram (Figure 3). In this example solvent C is the most suitable entrainer regarding high capacity and high selectivity.

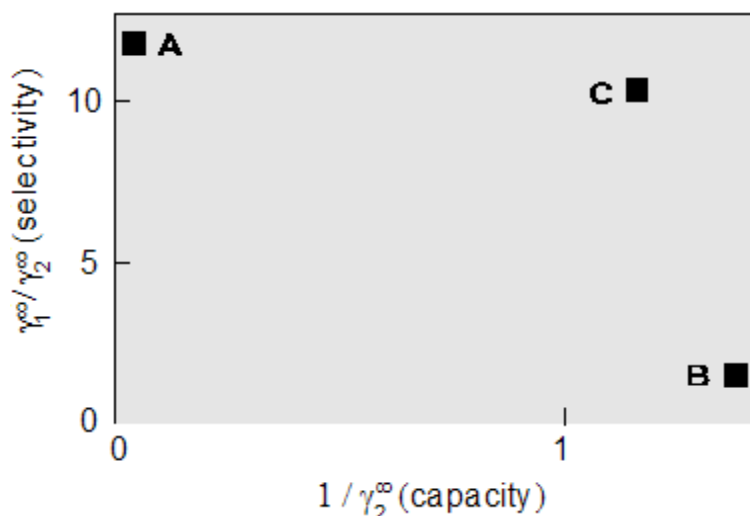


Fig. 3 Capacity – selectivity diagram for a given separation problem with the possible selective solvents A, B or C

Moreover, the densities of the pure components are given in the result file. If 2 liquid phases are formed, it is desirable to have a high difference in density between the 2 phases in order to have an easy phase splitting. Also the surface tensions are important factors for the design of extraction columns, since they can be used to calculate the boundary surface tension.

### Typical Result

The binary mixture of acetone and ethyl acetate can be separated by liquid-liquid extraction with water as extractant.

The selectivity of water is

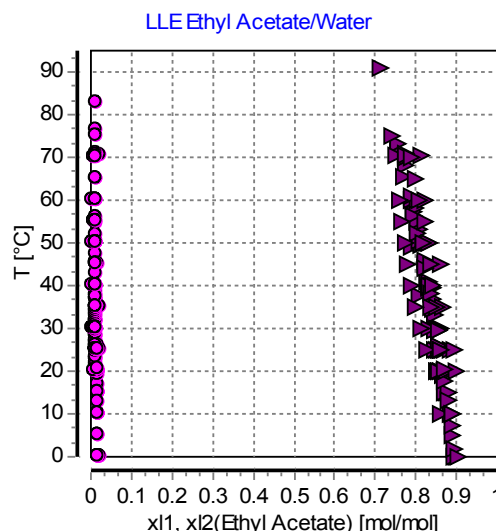
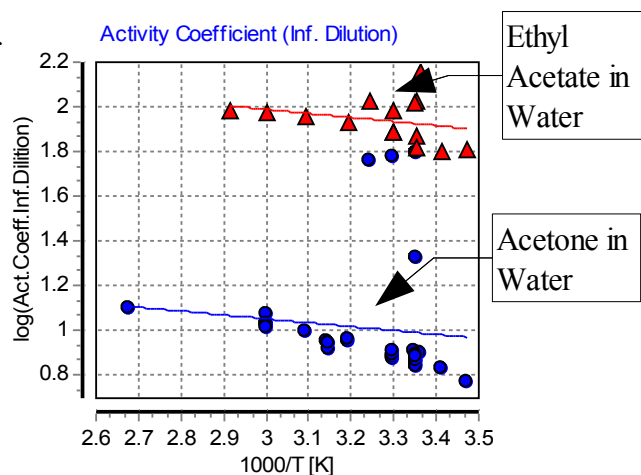
$$\frac{\gamma_{Ethyl\ acetate}^{\infty}}{\gamma_{Acetone}^{\infty}} = 10.74$$

and the capacities are

$$\frac{1}{\gamma_{Ethyl\ acetate}^{\infty}} = 0.0125257$$

$$\frac{1}{\gamma_{Acetone}^{\infty}} = 0.134626$$

Water and ethyl acetate are not completely miscible.



# Absorption

## Introduction

Besides the extractive and azeotropic distillation process and liquid-liquid extraction absorption is a further important separation process widely used. The goal of the absorption process is to separate components from a gas stream by using an appropriate absorbent. Contrary to the extractive and azeotropic distillation process which use energy and a solvent the absorption and liquid-liquid extraction processes use only a solvent as separating agent.

The suitability of an entrainer depends on its ability to change the ratio of the Henry coefficients of the gases to be separated. The basic condition for an absorbent is the different solubility of the gases in the absorbent.

A further important criterion for the selection of an absorbent is a sufficient capacity.

For estimating the selectivity of an absorbent it is – in most cases – sufficient to know the separation factor at infinite dilution  $\alpha_{ij}^{\infty}$ . The separation factor can be determined by the Henry coefficients if  $x_{Gas} \rightarrow 0$  by the relation

$$\alpha_{ij}^{\infty} \equiv \frac{K_{1,3}^{\infty}}{K_{2,3}^{\infty}} = \frac{H_{1,3}}{H_{2,3}}$$

Absorption exists in two types – physical and chemical. This program covers only the physical absorption because of missing equilibrium constants for the reversible chemical reaction.

## Program Description

The first  
selectio  
other b

Extractive Distillation | Azeotropic Distillation | Extraction | **Absorption** | Selectivity

Components in the Gaseous Phase

#DDB	DDB	Component
1050	DDB	Carbon dioxide
1051	DDB	Methane

Buttons: Add, Clear, DDB/All Gases, Statistics, Check Data Availability

Component to be Solved: [1050] Carbon dioxide

System Temperature [K]: 240

Minimum Separation Factor at Infinite Dilution ( $\alpha_{12}$  or inverse): 5

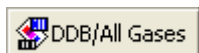
Henry Coefficient Source: Gas Solubility Databank

Buttons: Entrainer Selection, Create Log File

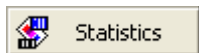
ed. The  
on. The

**Button**

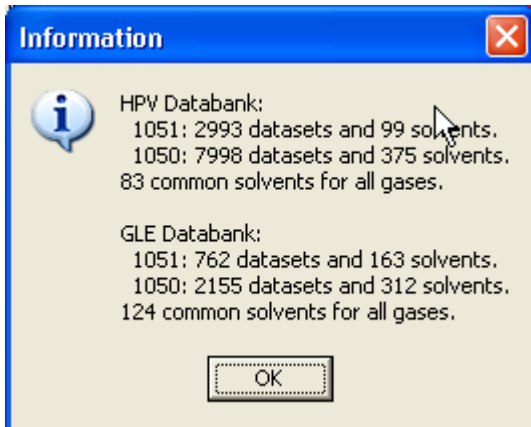
**Function**



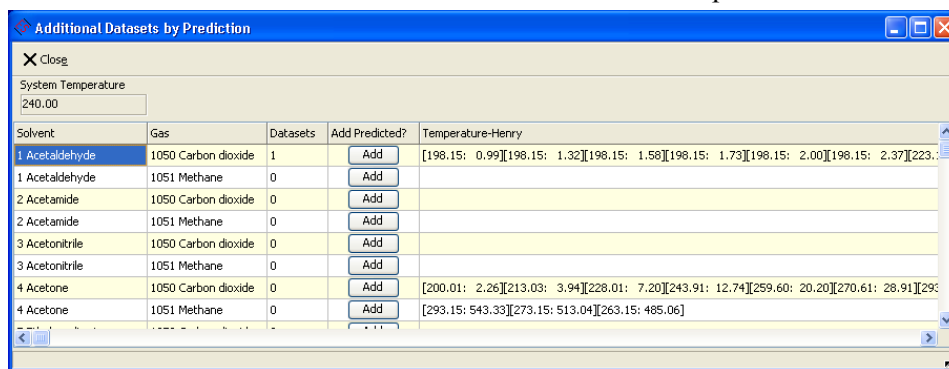
... search the Dortmund Data Bank for vapor-liquid equilibrium data and gas solubilities of both gases.



... show an overview on available data.



... search the data bank for suitable absorbents – some kind of a preview for the search.



This table shows the amount of available data for gas-absorbents pairs.

The further settings are

<i>Setting</i>	<i>Description</i>
Component to be Solved	Select the gas that should be solved better in the absorbent. This determines the sorting of the results.
System Temperature	Specify the process temperature
Minimum Separation Factor at Infinite Dilution	This value reduces the size of the result list and ignores absorbents which have a low selectivity.

The separation factors are determined by binary Henry coefficients. This program retrieves the Henry constants from

- Gas Solubility Databank
- Vapor-Liquid Equilibrium Databank (low boiling substances)
- Gas Solubility File (free formatted file)
- Vapor-Liquid Equilibrium File (low boiling substances, free formatted file)
- PSRK UNIFAC

<i>Henry Coefficient Source</i>	<i>Description</i>
Dortmund Data Bank Gas Solubilities (GLE)	This data bank mainly contains experimental Henry coefficients which can be used directly. Also available Kühnen-, Ostwald-, and Bunsen-Coefficient data sets are converted.
Dortmund Data Bank Vapor-liquid Equilibria Data Bank of Low Boiling Components (HPV)	This data bank mainly contains PxT data points which have to be converted.
Predictive Soave-Redlich-Kwong Model	This model is an equation of state model combined with a UNIFAC-like group contribution method in the $g^E$ mixing rule.

The program also allows to read GLE and HPV data sets from file.

## Data Sources

### Gas Solubilities Data Bank

The program searches binary data sets built of one of the gases and a single solvent. This data bank retrieval normally leads to a number of Henry constants at different temperatures. To obtain the Henry constant at the selected system temperature a regression has to be performed. If at least three Henry constants are available covering a temperature range of more than 10 K and if these Henry constants are less than 50 K away from the process temperature the Henry constant at system temperature is determined by linear interpolation or extrapolation. The maximum extrapolation is set to 25 K. If poor results of the regression are obtained ( $R < 0.5$ ) or if less than three points are available only direct experimental data are used. If more than a single point is available the program uses the mean value. If no exact matching points are available the program uses the nearest point if it not more than 25 K away.

The result list contains comments of the Henry constants determination procedure.

### Vapor-liquid Equilibrium Data Bank

This data bank contains PxT data which have to be converted to Henry constants. The detailed procedure is a little bit too long for this program description but is covered in details in the thesis of Michael Krummen<sup>lit.4</sup>.

### Predictive Soave-Redlich-Kwong

This data source is a model which allows to predict Henry constants from an equation of state combined with a UNIFAC-like group contribution method in the  $g^E$  mixing rule. This model only needs critical data and interaction parameters. This allows to calculate Henry constants for approx. 1000 components. Since this calculation is rather slow it is recommended to use the Entrainer Preselection list to shorten the list of potential solvents.

## Result

The program collects the Henry constants for all pairs of a gas and a suitable solvent and calculates the separation factor by the equation

$$\alpha_{ij}^{\infty} = \frac{H_{1,3}}{H_{2,3}}$$

Index 1 → Gas 1, index 2 → Gas 2, index 3 → Solvent, Absorbent

## Entrainer Results

### Results for Extractive Distillation, Azeotropic Distillation, Extraction, and Selectivity

**Entrainer Selection - Results**

Close Print Copy Save Sort Selectivity LLE

Exclude from list

Components without Boiling Point Information  Components without Viscosity Information

Components without Melting Point Information  Components without Density Information

Components without Azeotropic Information for 1-2/1-3  Components with  $|T(\alpha)-T(\text{System})| > 5K$

Components without LLE Information  Component without Surface Tension Information

Visible columns

Vapor Pressures  Surface Tension  Separation Factor

Melting Point  Names  Selectivity

Density  Azeotropic Information  Capacity

Viscosity  LLE Information

Components to be Separated:

DDB No.	Name	Formula	Ps [kPa]	CAS No.
(1) 110	Methanol	CH4O	60.09	67-56-1
(2) 4	Acetone	C3H6O	86.93	67-64-1

Given System Temperature = 325.00 [K]

Azeotropic data for system (1)-(2):  
 homEmax at P = 89.30 kPa  
 strongly temperature dependent azeotropic composition for this system  
 --> components can be separated performing binary pressure swing distillation

List of Entrainers (Extractive Distillation)

Table Sorted by Separation Factors

DDB No.	Entrainer	Ps [kPa]	Tm [K]	Viscosity [mPas]	alpha(1,2) (T in [K])
727	Pentadecane	4.37E-003	283.15	1.578	21.190 (308)
2271	1-Bromo-2-chloro-1,1,2-trifluoroethane	n.a.	n.a.	n.a.	15.135 (308)
887	Deuterium oxide <Heavy water>	12.50	276.96	0.668	0.109 (298)
1795	1,12-Dodecane diamine	5.35E-004	n.a.	n.a.	0.125 (325)
174	Water	13.48	273.15	0.508	0.144 (325)

### Limited Views

The display of components can be filtered by several criteria. The *Exclude from list* criteria allow to suppress components for which some of the required information is not available.

The *Visible columns* criteria allows to suppress some specified columns. The normal result table is often too wide even for a landscape mode print. Suppressing unused columns allows to fit the print again.

## Sorting

This entrainer list can be arranged by different criteria:

<i>criteria</i>	<i>function</i>
selectivity	sort by selectivities
separation factor	sort by separation factors
boiling point / vapor pressure	sort by boiling points / vapor pressures
melting point	sort by melting points
surface tension	sort by surface tensions
viscosity	sort by viscosities
density	sort by densities
functional groups	sort by functional groups: about the button "functional groups" mod. UNIFAC (Do) main groups can be selected. Top: solvents which consist of the selected groups Middle: solvents which consist not only of the selected groups Bottom: solvents which cannot be incremented
component class	sort by component classes (based on mod. UNIFAC (Do) main groups): alkanes, aromatics, alcohols, water, ketones, esters, ethers, amides, halogenated compounds, unsaturated compounds, aldehydes, carbonic acids, other components
DDB code no.	sort by DDB code no.
azeotropic information	sort by azeotropic information
LLE information	sort by LLE information

## Links

The result table contains two types of links (green underlined text): The numbers besides the component names open a context menu

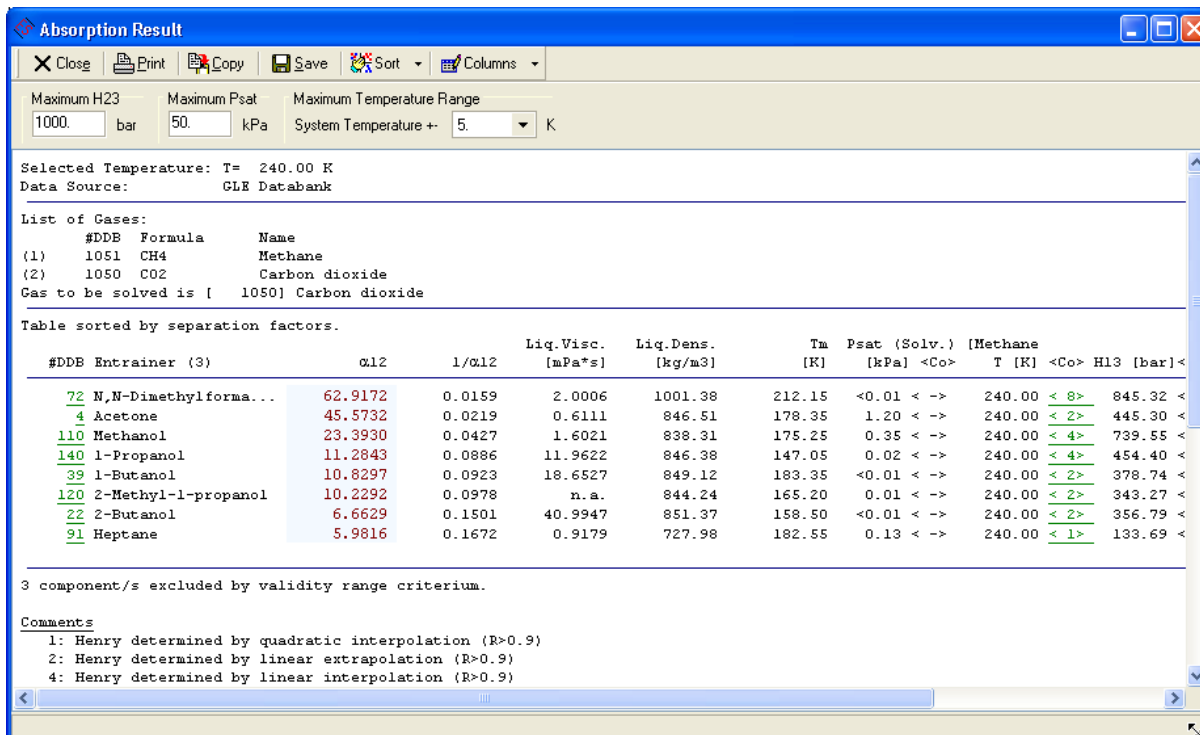
<a href="#">Display Component Info</a> <a href="#">Display GLE/HPV Databank Entries</a> <a href="#">Display Pure Component Properties</a>
---

allowing to display several further information for the solvent.

The links next to the selectivity columns are links to explanations like

Remark <\*>: Extrapolated activity coefficients for at least one component

## Result for Absorption



### Limited Views

The list of entrainers can be filtered by an allowed maximum value of Henry constants, a maximum value of the saturated vapor pressure of the solvent, and a maximum temperature difference of the used Henry coefficients to the wanted process temperature.

### Sorting

The sorting criteria can be all the columns from the result table:

### Links

The result table contains two types of links (green underlined text): The numbers besides the component names open a context menu allowing to display several further information for the solvent.

- Display Component Info
- Display GLE/HPV Databank Entries
- Display Pure Component Properties

- Separation Factors
- DDB Numbers
- Densities
- Viscosities
- Surface Tensions
- Saturated Pressure
- Melting Point**
- Component Class
- Henry13
- Henry23

The links in the <Co> columns are links to the explanation what type of Henry coefficients have been used:

#### Comments

- 1: Henry determined by quadratic interpolation (R>0.9)
- 2: Henry determined by linear extrapolation (R>0.9)
- 4: Henry determined by linear interpolation (R>0.9)
- 8: Henry determined by linear interpolation (R>0.5)
- 9: Henry determined by interpolation between two points.

## Literature

1. M. Krummen, Thesis, Carl-von-Ossietzky-Universität Oldenburg (2004)
2. D. Gruber, Thesis, Universität Oldenburg (1999)
3. C. Möllmann, Thesis, Universität Oldenburg (1996)
4. C. Möllmann, J. Gmehling, "Auswahl selektiver Zusatzstoffe für die Rektifikation durch kombinierten Zugriff auf experimentelle und vorausberechnete Gleichgewichtsdaten," Chem.-Ing.-Tech. 69, 324 (1997)
5. J. Gmehling, C. Möllmann, "Synthesis of Distillation Processes Using Thermodynamic Models and the Dortmund Data Bank", Ind. Eng. Chem. Research 37, 3112-3123 (1998)